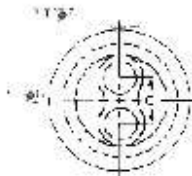
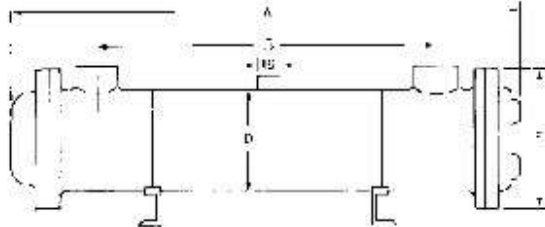
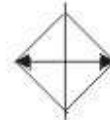


OIL COOLER 油壓油冷器

◆ OR-TYPE SERIES



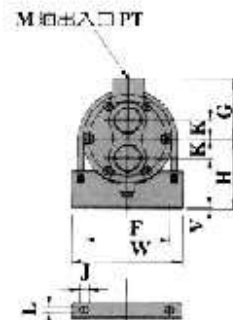
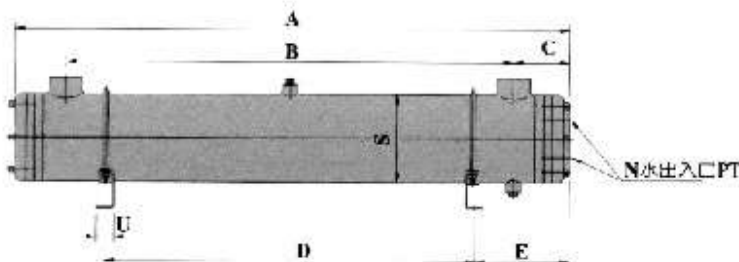
◆ SYMBOLS 油壓表示記號



◆ SPECIFICATIONS 規格

MODEL 型式	A	B	C	D	E	φF	φG	RADIATOR TUBE 數熱管	RADIATOR AREA 數熱面積	OIL CAPACITY 油冷容量	WEIGHT 重量	PUMP FLOW 泵浦流量	WATER FLOW 水流量
OR - 60	465	295	40	89.1	120	3/4	3/4	22	0.24	60	8	100	60
OR - 100	540	370	55	114.3	140	3/4	3/4	26	0.35	100	12	200	100
OR - 150	580	375	65	139.8	170	1 1/4	3/4	42	0.6	150	15	300	150
OR - 250	800	600	65	139.8	170	1 1/4	3/4	58	1.2	250	22	300	150
OR - 350	1205	1000	65	139.8	170	1 1/4	3/4	58	1.9	350	30	300	150
OR - 600	1225	970	85	165.2	196	2	1 1/2	58	1.9	600	40	400	200
OR - 800	1725	1470	85	165.2	196	2	1 1/2	58	2.8	800	50	400	200
OR - 1000	2140	1890	85	165.2	196	2	1 1/2	58	3.5	1000	60	400	200
OR - 1200	2520	2270	85	165.2	196	2	1 1/2	58	4.2	1200	70	400	200

◆ HH-TYPE SERIES



TYPE 型式	A	B	C	D	E	F	J	G	H	K	L	M	N	S	U	V	W	Area 面積 m ²	Flow 流量 l/min	Mass 重量 Kg
HH-0905	590	408	88	270	150	80	25	63	80	22	10	3/4"	3/4"	89.5	30	2.3	115	0.41	60	10
HH-0908	880	720	78	500	190	80	25	63	80	22	10	3/4"	3/4"	89.5	30	2.3	115	0.7	100	14
HH-1405	600	398	100	270	162	140	32	90	110	28	12	1 1/4"	1 1/4"	140.8	40	3.2	176	1.1	150	20
HH-1408	890	710	85	500	202	140	32	90	110	28	12	1 1/4"	1 1/4"	140.8	40	3.2	176	1.9	250	25
HH-1412	1310	1110	100	700	303	140	32	90	110	28	12	1 1/2"	1 1/4"	140.8	40	3.2	176	2.9	350	37
HH-1712	1335	1060	138	700	310	145	32	115	125	32	12	2"	1 1/4"	166.5	40	3.2	200	4.6	600	48
HH-1716	1745	1510	118	850	460	145	32	115	125	32	12	2"	1 1/4"	166.5	40	3.2	200	6.5	840	56
HH-1722	2200	1850	160	1650	270	145	32	115	125	32	12	2"	1 1/4"	166.5	40	3.2	200	7.2	1000	72