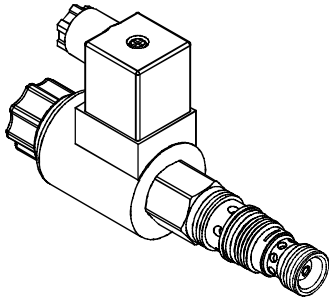


### ◆ MODEL 型式 EVWE11A-30A

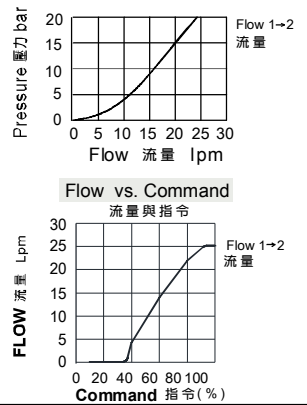


### ◆ SPECIFICATIONS 規格

A meter-in, electro-proportional throttle valve. While unenergized, it has the supply blocked at port 1 and port 2 is drained to tank at port 3. Energizing the coil generates a closing force on the spool, creating a metering orifice in the 1 to 2 direction that is proportional to the coil command current. The valve self-compensates in the 1-to-2 direction. Flow capacity in the 2-to-3 direction is about 6 L/min. This valve is meant to be used in a circuit that has a separate passage to tank.

進口節流，電比例節流閥。斷電時，油路為供油口1不通，口2通過口3處的油箱泄油。通電時，在口1到口2方向將形成一個與電流大小比例的節流口。此閥在口1到口2方向上具有自補償效果。口2到口3方向上流通能力為 6 L/min。此閥用在有單獨回油箱的油路中。

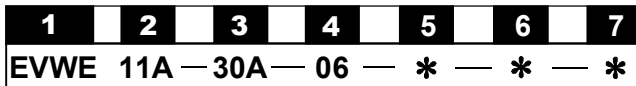
### ◆ PERFORMANCE 特性曲線



### ◆ SPECIFICATIONS 規格

Model Number 型式號碼	Maximum Pressure 最大壓力 bar	Maximum Flow 最大流量 lpm	Maximum Current 最大電流 mA	Voltage 電壓 VDC	Weight 重量 Kg
EVWE11A-30A	350 (5076psi)	34 (8.98 gpm)	1300±10%	12	0.61 (1.34 lbs)
			650±10%	24	
Fluid Type 流體型式			ISO VG 32, 46, 68		
Viscosity 黏性 cSt			10~400 (59~1854 SSU)		
Operating Temperature 操作溫度 °C			-30~100 (-22~212°F)		
Contamination Level 污染標準			ISO4406. 20/18/15 NAS1638. 9		

### ◆ HOW TO ORDER 編號說明



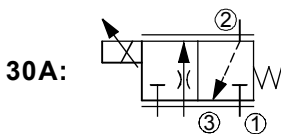
#### 1 VALVE SERIES 系列名稱

EVWE = Electro-proportional, Throttle Valves  
電磁比例節流閥

#### 2 SUBPLATE MOUNTING SIZE 稱呼口徑

11A : T-11A  
Cavity 孔口: CST-11A  
See Appendices-A 見附錄A  
For Manifold See Appendices-B 油路板見附錄B

#### 3 CONTROL PORT(S) 動作形式



#### 4 FLOW SPECIFICATIONS 流量規格

Flow Option 流量選擇	
06	0.4 ~ 6.1 L/min
15	0.4 ~ 15 L/min
23	0.4 ~ 23 L/min
34	0.4 ~ 34 L/min

#### 5 TYPE OF COIL 線圈類型

Non : Without Coil 無記號:無線圈  
D1 : DC12V  
D2 : DC24V

#### 6 WIRING TYPE 接線型式

Non: WIRING BOX TYPE (DIN) S: AMP SUPERSEAL-V  
無: 接線盒式 (DIN)



X: DOUBLE LEAD  
X: 雙接線方式



#### 7 ADJUSTMENT OPTION 調整選擇

Non	Y
Non: Standard 無記號: 標準型	Y: Push Style Manual Override 推壓型-手動操作復位

### ◆ DIMENSIONS 外型尺寸圖

