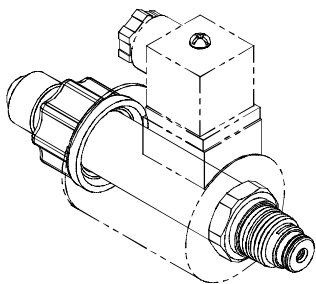
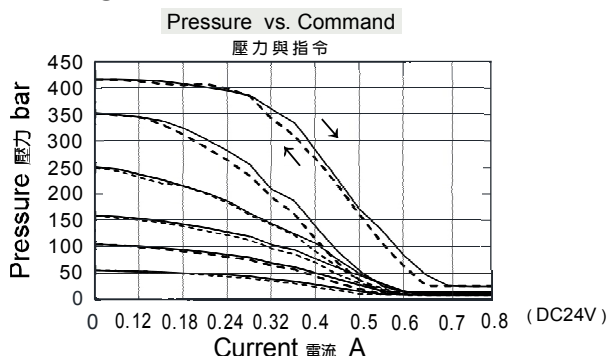


◆ **MODEL 型式**  
EVRR-T8H



◆ **PERFORMANCE 特性曲線**



◆ **HANDING DESCRIPTION 使用說明**

This 2-port, pilot-stage, direct-acting relief cartridge is an electro-proportionally controlled, normally-closed pressure regulating valve. The valve is spring biased closed to its highest setting. Increasing current to the coil will proportionally decrease the pressure setting.

此類2口、先導級直動式溢流閥為電比例控制、常閉壓力調節閥。此類閥在偏置彈簧力作用下關閉並處於最大壓力設定。增加電磁線圈的輸入電流會比例地減少閥的壓力設定。

◆ **SPECIFICATIONS 規格**

Model Number 型式號碼	Maximum Pressure 最大壓力 bar	Maximum Flow 最大流量 lpm	Rated Current 最大電流 mA	Voltage 電壓 VDC	Weight 重量 Kg
EVRR-T8H	420 (6092psi)	2 (0.53 gpm)	1300±10%	12	0.23 (0.51 lbs)
			650±10%	24	
<b>Fluid Type</b> 流體型式		ISO VG 32, 46, 68			
<b>Viscosity</b> 黏性 cSt		10~400 (59~1854 SSU)			
<b>Operating Temperature</b> 操作溫度 °C		-30~100 (-22~212°F)			
<b>Contamination Level</b> 污染標準		ISO4406. 20/18/15 NAS1638. 9			

◆ **HOW TO ORDER 編號說明**

<b>1</b>	<b>2</b>	<b>3</b>
EVRR	T8H	— 10

**1 VALVE SERIES 系列名稱**

EVRR = Proportional Relief Valves  
(High pressure setting with no command)  
比例調壓閥(無指令最高壓力設定)

**2 SUBPLATE MOUNTING SIZE 稱呼口徑**

T8H : T-8A  
Cavity 孔口 : CST-8A  
See Appendices-A 見附錄A  
For Manifold See Appendices-B 油路板見附錄B

**3 ADJUSTMENT PRESSURE 壓力調整範圍**

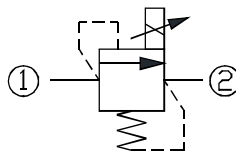
Code 編碼	Adjustment pressure 壓力調整範圍
05	10 ~ 55 (bar)
10	10 ~ 100 (bar)
15	10 ~ 150 (bar)
25	15 ~ 250 (bar)
35	15 ~ 350 (bar)
42	35 ~ 420 (bar)

◆ **TYPE OF COIL 線圈類型**

Model number 型式編號 : COT08  
See Appendices-D  
見附錄 D

- Coils must be ordered separately  
線圈必須分開訂購

◆ **CONTROL PORT(S) 動作形式**



◆ **DIMENSIONS 外型尺寸圖**

