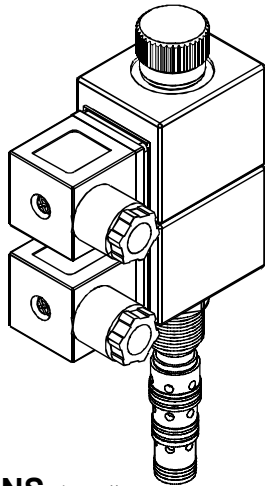
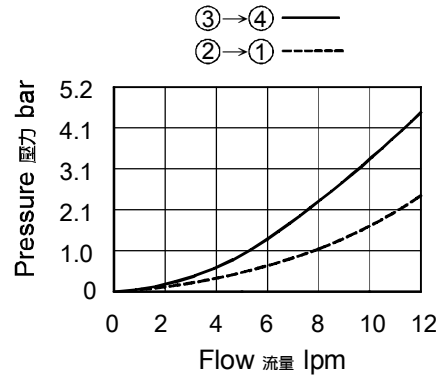


◆ **MODEL 型 式**
VWE08-C4



◆ **PERFORMANCE 特性曲線**



◆ **SPECIFICATIONS 規 格**

Model Number 型式號碼	Maximum Pressure 最大壓力 bar	Maximum Flow 最大流量 lpm	Weight 重量 Kg
VWE08-C4	210 (3046 psi)	10 (2.64 gpm)	0.75 (1.65 lbs)
Fluid Type 流體型式		ISO VG 32, 46, 68	
Viscosity 黏性 cSt		10~400 (59~1854 SSU)	
Operating Temperature 操作溫度 °C		-30~100 (-22~212°F)	
Contamination Level 污染標準		ISO4406. 20/18/15 NAS1638. 9	

◆ **HOW TO ORDER 編號說明**

1	2	3	4	5
VWE	08	C4	A1	X

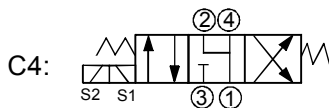
1 VALVE SERIES 系列名稱

VWE= Spool 4-Way 3-Position
閥蕊 四方向 三方位

2 SUBPLATE MOUNTING SIZE 稱呼口徑

Size:08
Cavity 孔口: CS08-4N
See Appendices-A 見附錄A
For Manifold See Appendices-B
油路板見附錄B

3 CONTROL PORT(S) 動作形式



4 TYPE OF COIL 線圈類型

Non: Without Coil 無記號:無線圈
A1: RAC110V 60/50HZ **D1**: DC12V
A2: RAC220V 60/50HZ **D2**: DC24V

5 WIRING TYPE 接線型式

Non: WIRING BOX TYPE(DIN) **X**: DOUBLE LEAD
無:接線盒式(DIN) 雙接線方式



※ For more technical information of wiring type please refer to the Appendices-D or contact with us .
接線型式的詳細技術資料請查附錄-D或與我們聯繫.

◆ **DIMENSIONS** 外型尺寸圖

