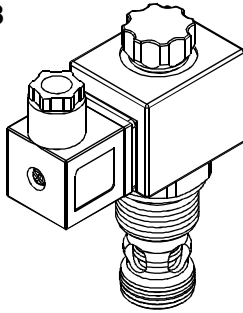
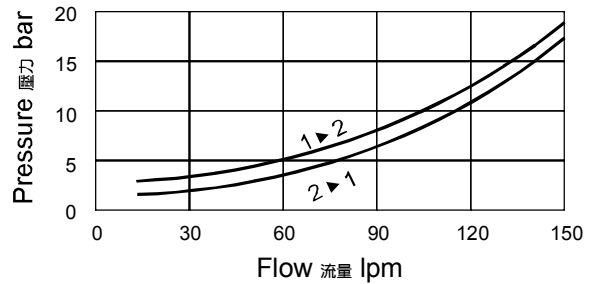


◆ MODEL 型式 VSV12U-28



◆ PERFORMANCE 特性曲線

Pressure Drop 壓力降

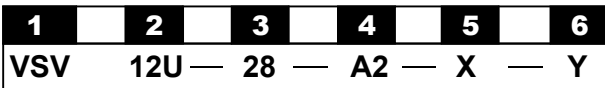


◆ SPECIFICATIONS 規格

| Model Number 型式號碼 | Maximum Pressure 最大壓力 bar | Maximum Flow 最大流量 lpm | Weight 重量 Kg |
|-------------------------------|---------------------------|------------------------------|-----------------|
| VSV12U-28 | 350 (5076 psi) | 150 (39.63 gpm) | 0.55 (1.21 lbs) |
| Fluid Type 流體型式 | | ISO VG 32, 46, 68 | |
| Viscosity 黏性 cSt | | 10~400 (59~1854 SSU) | |
| Operating Temperature 操作溫度 °C | | -30~100 (-22~212°F) | |
| Contamination Level 污染標準 | | ISO4406. 20/18/15 NAS1638. 9 | |

◆ HOW TO ORDER 編號說明

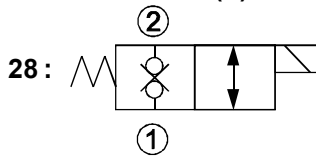
● Internal Leakage: max of 0.15 cc/min (3 drops/min) at 350 bar (5076 psi).
內部洩漏:在350bar(5076psi)時,最大為0.15毫升/分鐘(3滴/分鐘)。



1 VALVE SERIES 系列名稱
VSV=Cartridge Type Solenoid Operated Check Valves 插入式電磁止逆閥

2 SUBPLATE MOUNTING SIZE 稱呼口徑
Size:12U
Cavity 孔口: CS12U-2N
See Appendices-A 見附錄A
For Manifold See Appendices-B 油路板見附錄B

3 CONTROL PORT(S) 動作形式



4 TYPE OF COIL 線圈類型
Non: Without Coil 無記號:無線圈
A1 : RAC110V 60/50HZ D1 : DC12V
A2 : RAC220V 60/50HZ D2 : DC24V

5 WIRING TYPE 接線型式
Non:WIRING BOX TYPE(DIN) 無:接線盒式(DIN) X: DOUBLE LEAD 雙接線方式



※ For more technical information of wiring type please refer to the Appendices-D or contact with us.
接線型式的詳細技術資料請查附錄-D或與我們聯繫。

6 ADJUSTMENT OPTION 調整選擇

| | | | |
|--|--|---|--|
| Non Non:Standard 無記號:標準型 | | Z Z:Cable Operated Pull Style Override 軟軸控型-拉動式操作復位 | |
| Y Y:Twist Style Manual Override 旋緊型-手動操作復位 | | M8xP1.25 | |

◆ DIMENSIONS 外型尺寸圖

