

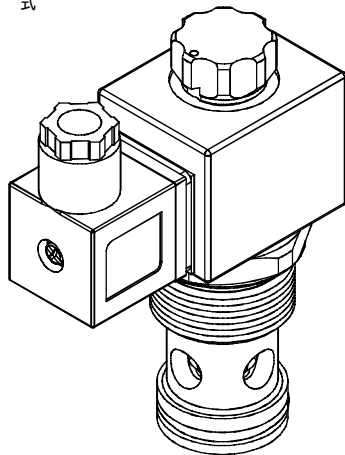
# SOLENOID OPERATED CARTRIDGE VALVES

插入式電磁閥

## VSE SERIES CARTRIDGE TYPE SOLENOID OPERATED CHECK VALVES

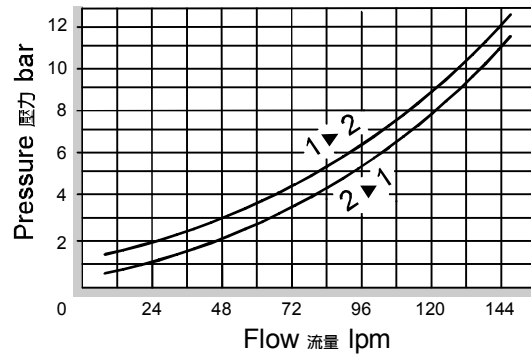
VSE 系列插入式電磁止逆閥

### ◆ MODEL 型 式 VSE12-22



### ◆ PERFORMANCE 特性曲線

Pressure Drop 壓力降



### ◆ SPECIFICATIONS 規 格

| Model Number 型式號碼             | Maximum Pressure 最大壓力 bar | Maximum Flow 最大流量 lpm        | Weight 重量 Kg    |
|-------------------------------|---------------------------|------------------------------|-----------------|
| VSE12-22                      | 350 (5076 psi)            | 150 (39.63 gpm)              | 0.66 (1.46 lbs) |
| Fluid Type 流體型式               |                           | ISO VG 32, 46, 68            |                 |
| Viscosity 黏性 cSt              |                           | 10~400 (59~1854 SSU)         |                 |
| Operating Temperature 操作溫度 °C |                           | -30~100 (-22~212°F)          |                 |
| Contamination Level 污染標準      |                           | ISO4406. 20/18/15 NAS1638. 9 |                 |

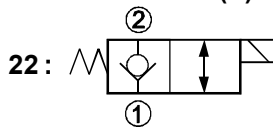
### ◆ HOW TO ORDER 編號說明

|     |    |   |    |   |            |
|-----|----|---|----|---|------------|
| 1   | 2  | 3 | 4  | 5 | 6          |
| VSE | 12 | — | 22 | — | A2 — X — Y |

**1 VALVE SERIES 系列名稱**  
VSE=Cartridge Type Solenoid Operated Check Valves 插入式電磁止逆閥

**2 SUBPLATE MOUNTING SIZE 稱呼口徑**  
12: E-021  
Cavity 孔口: CSE 021-2N  
See Appendices-A 見附錄A  
For Manifold See Appendices-B 油路板見附錄B

**3 CONTROL PORT(S) 動作形式**



**4 TYPE OF COIL 線圈類型**  
Non: Without Coil 無記號:無線圈  
A1 : RAC110V 60/50HZ      D1 : DC12V  
A2 : RAC220V 60/50HZ      D2 : DC24V

**5 WIRING TYPE 接線型式**  
Non: WIRING BOX TYPE (DIN) 無:接線盒式 (DIN)      X: DOUBLE LEAD 雙接線方式



※ For more technical information of wiring type please refer to the Appendices-D or contact with us .  
接線型式的詳細技術資料請查附錄-D或與我們聯繫.

### 6 ADJUSTMENT OPTION 調整選擇

|  |  |
|--|--|
| <b>Non</b><br>Non: Standard<br>無記號: 標準型                    |  |
| <b>Y</b><br>Y: Twist Style Manual Override<br>旋緊型 - 手動操作復位 |  |

### ◆ DIMENSIONS 外型尺寸圖

