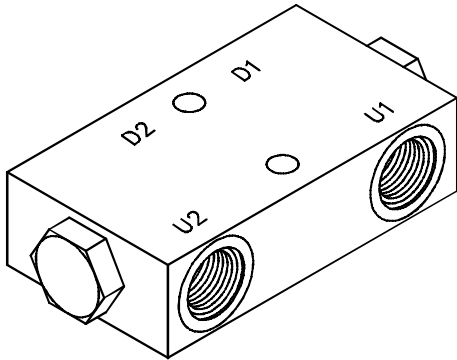


◆ MODEL 型式

VPCL-08A



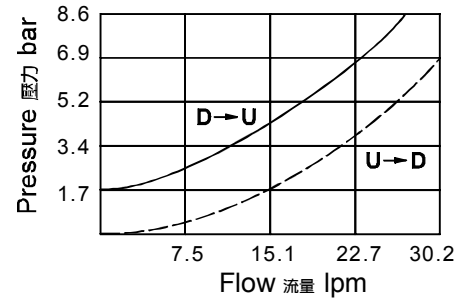
◆ DESCRIPTION 說明

An in-line-housed, double-pilot-operated, hydraulic check valve for use in blocking or load holding circuits.

內鍵箱，雙重引導操作，使用於關閉或保持負載電路的液壓止逆閥。

◆ ALUMINUM VALVE 鋁合金閥門

◆ PERFORMANCE 特性曲線 (Cartridge Only)



◆ SPECIFICATIONS 規格

Model Number 型式號碼	Maximum Pressure 最大壓力 bar	Pilot Ratio 引導比例	Maximum Flow 最大流量 Lpm	Weight 重量 Kg
VPCL-08A	350 (5076psi)	4:1 / 6:1	30 (7.93 gpm)	0.55 (1.21 lbs)
Fluid Type 流體型式		ISO VG 32,46,68		
Viscosity 黏性 cSt		10~400 (59~1854SSU)		
Operating Temperature 操作溫度 °C		-30~100 (-22~212°F)		
Contamination Level 污染標準		ISO4406. 20/18/15 NAS1638. 9		

◆ HOW TO ORDER 編號說明

1	2	3	4	5
VPCL	08A	*	4A	20

1 VALVE SERIES 系列名稱
VPCL = Pilot Operated Check Valves
引導式止逆閥

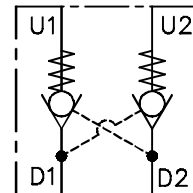
2 PORTING 閥口 3/8

3 THREADED TYPE 螺紋規格
1P: PT 2N: NPT 3G: PF(G)
4A: SAE 5B: BSP

4 PILOT RATIO 引導比例
4A = 4 : 1
6A = 6 : 1

5 BIAS SPRING 開啓壓力
05 : 0.5 bar (7psi)
20 : 2 bar (29psi) (Standard 標準)
50 : 4 bar (58psi)

◆ CONTROL PORT(S) 動作形式



◆ DIMENSIONS 外型尺寸圖

