

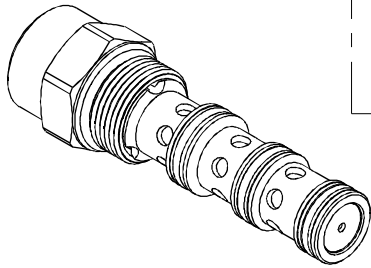
DIRECTIONAL VALVES 方向閥

VEP SERIES CARTRIDGE TYPE, PILOT-OPERATED, HYDRAULIC DIRECTIONAL VALVE

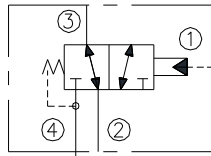
VEP 系列插入式液控方向閥

MODEL 型式

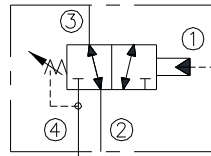
VEP-16



CONTROL PORT(S) 動作形式



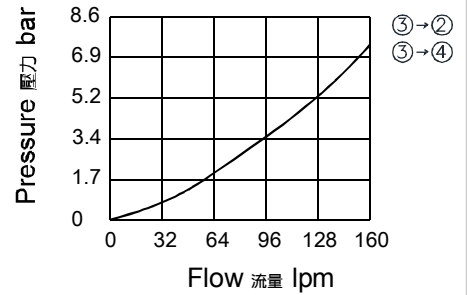
Fixed pressure
固定壓力



Adjustable pressure
可調壓力

PERFORMANCE (Cartridge Only)

特性曲線



DESCRIPTION 說明

A cartridge-style, pilot-operated, hydraulic directional valve for three-way circuits requiring remote pilot actuation. In unpiloted, the item allows flow between 3 and 2 while blocking at 4. On remote pilot signal at 1, the valve shifts to allow flow between 3 and 4 while blocking at 2.

插入式液控方向閥，用於遙控三通油路。

無液控時，允許油液從3向2雙向流動，而在4處截止。當遠端液控信號到達1時，閥芯移動，3流向4接通，而2處閉合。

SPECIFICATIONS 規格

Model Number 型式號碼	Maximum Pressure 最大壓力 bar	Maximum Flow 最大流量 Lpm	Weight 重量 Kg
VEP-16	350 (5076 psi)	160 (42.27 gpm)	0.76(1.68 lbs)
Fluid Type 流體型式		ISO VG 32,46,68	
Viscosity 黏性 cSt		10~400 (59~1854SSU)	
Operating Temperature 操作溫度 °C		-30~100 (-22~212°F)	
Contamination Level 污染標準		ISO4406. 20/18/15 NAS1638. 9	

HOW TO ORDER 編號說明

1	2	3	4	5
VEP	16	— 40 —	* —	* —

5 SEALS 密封件

Non : NBR (Standard) 無記號：丁腈橡膠(標準型)
 HN : HNBR HN : 氫化丁腈橡膠
 V : VITON V : 氟橡膠

1 VALVE SERIES 系列名稱

VEP= Cartridge Type, Pilot-operated,
 Hydraulic Directional Valve
 (Direct Acting External Pilot Internal Drain)
 插入式液控方向閥(直動式外控內池)

2 SUBPLATE MOUNTING SIZE 稱呼口徑

Size : 16
 Cavity 孔口: CS16-4N
 See Appendices-A 見附錄A
 For Manifold See Appendices-B 油路板見附錄B

3 SPRING PRESSURE 彈簧壓力

Fixed pressure 固定壓力	Code 編碼	Spring pressure 彈簧壓力	
	40	4.0 bar (60 psi)	
Adjustable pressure 可調壓力	70	7.5 bar (110 psi)	
	110	11.7 bar (170 psi)	
Spring pressure tolerance ±15% 彈簧壓力公差值±15%			
Adjustable pressure 可調壓力	Code 編碼	Adjustment pressure 壓力調整範圍	
	M15	0 ~ 11.7 bar (170 psi)	

4 SPOOL TYPE 閥芯型式

Non: Standard 無記號：標準型
 NS: With sealed spool NS：密封閥芯

● 7.5 bar bias spring is the minimum required for use with sealed spool.
 與密封閥芯配合使用時，所需最小彈簧預壓力為7.5bar。

DIMENSIONS 外型尺寸圖

