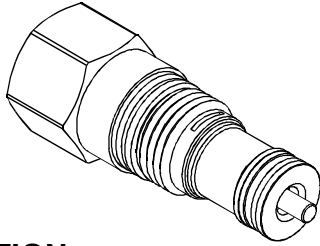
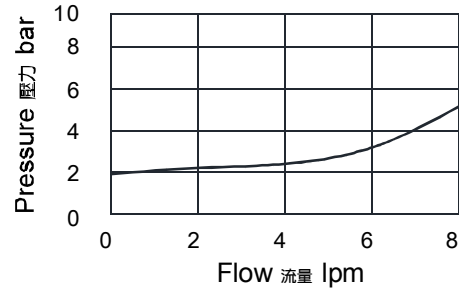


◆ **MODEL** 型式  
**VDCP-01**



◆ **PERFORMANCE** 特性曲線



◆ **DESCRIPTION** 說明

The phaser check is a check valve, with the poppet at port 1 mechanically actuated. The valve is meant to be installed into the piston of a cylinder. When the cylinder reaches the end of its stroke the poppet in the phaser check is shoved off its seat allowing flow through the piston. This allows two cylinders to get back into phase.

This valve is not designed to handle side forces. Actuating direction must be axial.

A cylinder that does its work while extending can put a large load on the rod gland at the end of its stroke. A phaser check in the piston can limit the unnecessary force on the gland.

A phaser check in the piston of a vertically mounted cylinder will bleed air at the end of the stroke.

Phaser checks in the pistons of master/slave cylinders will synchronize the cylinders simply by taking the mechanism to the end of its travel in both directions. This lends itself to dual cylinder steering applications.

相位單向閥是由一個單向閥組成並在口1配置由機械驅動的閥芯。此閥常安裝在液壓缸活塞。當液壓缸到達行程終點，相位單向閥的閥芯會被推離閥座從而使液流通過活塞。此閥可以使兩個液壓缸達到同一個相位。

此閥不能承受側向壓力。驅動力方向必須是軸向的。

當液壓缸伸出時，很有可能帶著重大負載沖擊端蓋。這種安裝在活塞中的相位控制單向閥就可以降低不必要的沖擊力。

用在垂直液壓缸中的相位單向閥可以在動作末端排出內部的空氣。

相位單向閥使用於主動液壓缸中，可以簡單的利用機械結構控制兩缸在雙向的同步。他可以很好的應用於雙缸的動作控制。

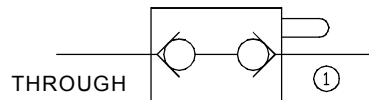
◆ **SPECIFICATIONS** 規格

Model Number 型式號碼	Maximum Pressure 最大壓力 bar	Cracking Pressure 開啟壓力 bar	Flow 流量 lpm	Weight 重量 Kg
VDCP-01	350 (5076 psi)	2 (29 psi)	4.7 (1.24 gpm)	0.07 (0.16 lbs)
<b>Fluid Type</b> 流體型式		ISO VG 32 , 46 , 68		
<b>Viscosity</b> 黏性 cSt		10~400 (59~1854 SSU)		
<b>Operating Temperature</b> 操作溫度 °C		-30~100 (-22~212°F)		
<b>Contamination Level</b> 污染標準		ISO4406. 20/18/15 NAS1638. 9		

◆ **HOW TO ORDER** 編號說明

<b>1</b>	<b>2</b>	<b>3</b>
VDCP	01	G

◆ **CONTROL PORT(S)** 動作形式



**1 VALVE SERIES** 系列名稱

VDCP= Mechanically Operated, Check Valve  
機械操作單向閥

**2 SUBPLATE MOUNTING SIZE:** 稱呼口徑

01:T-162DP  
Cavity 孔口:CST-162DP  
See Appendices-A 見附錄A  
For Manifold See Appendices-B  
油路板見附錄B

**3 PORTS** 接口

3G : G1/4  
4A : SAE4  
M : Hex 8.1(None) (無)

◆ **DIMENSIONS** 外型尺寸圖

