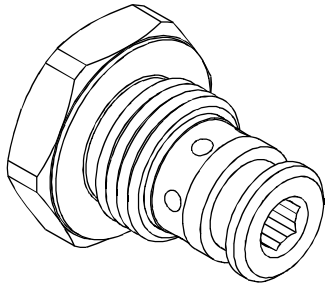


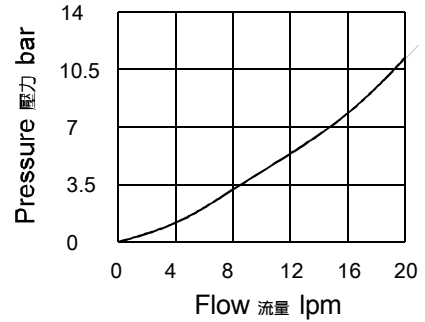
### ◆ MODEL 型 式

VCV-05



### ◆ PERFORMANCE 特性曲線

(Cartridge Only)



### ◆ SPECIFICATIONS 規 格

Model Number 型式號碼	Operating Pressure 操作壓力 bar	Flow 流量 lpm	Weight 重量 Kg
VCV-05	240 (3481psi)	19 (5.02 gpm)	0.06 (0.13 lbs)
Fluid Type 流體型式		ISO VG 32, 46, 68	
Viscosity 黏性 cSt		10~400 (59~1854 SSU)	
Operating Temperature 操作溫度 °C		-30~100 (-22~212°F)	
Contamination Level 污染標準		ISO4406. 20/18/15 NAS1638. 9	

### ◆ HOW TO ORDER 編號說明

1	2	3	4
VCV	05	05	10

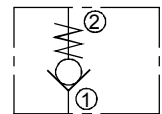
**1 VALVE SERIES** 系列名稱  
VCV= Check Valves 止逆閥

**2 SUBPLATE MOUNTING SIZE** 稱呼口徑  
Size:05  
Cavity 孔口:CS05-2N  
For Manifold See Appendices-B  
油路板見附錄B

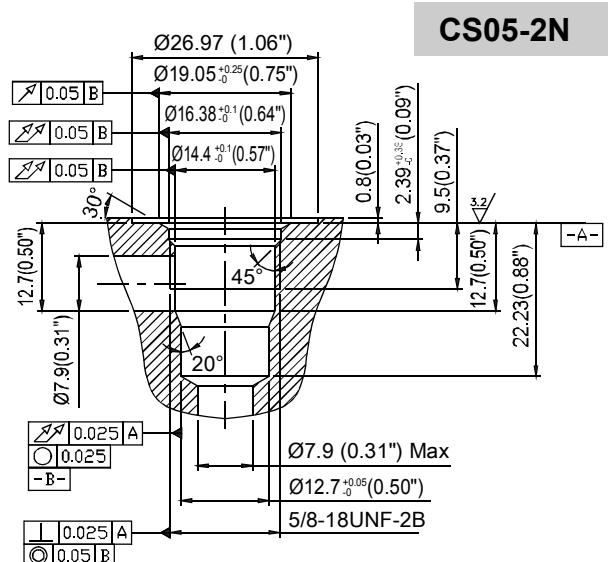
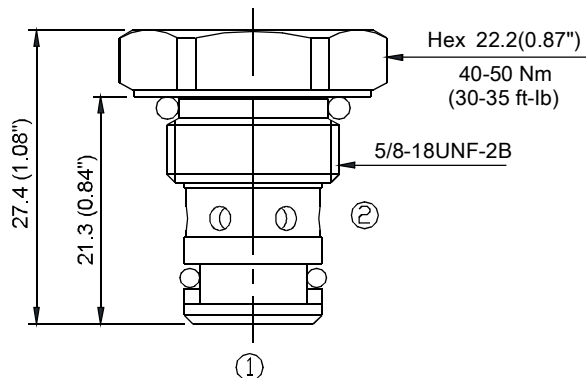
**3 CRACKING PRESSURE** 開啓壓力  
05 : 0.35 bar (5.08 psi)  
10 : 1.0 bar (14.50 psi)  
30 : 3.5 bar (50.76 psi)

**4 DESIGN NO** 設計編號

### ◆ CONTROL PORT(S) 動作形式



### ◆ DIMENSIONS 外型尺寸圖



CS05-2N