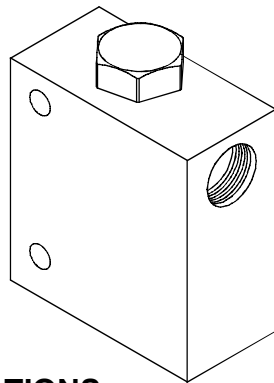


DIRECTIONAL VALVES 方向閥

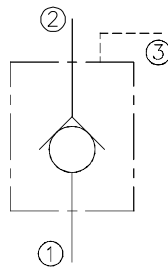
VCKD SERIES CARTRIDGE PILOT OPERATED CHECK VALVES VCKD系列插入式引導止逆閥

MODEL 型式

VCKD-06



CONTROL PORT(S) 動作形式



Body Material 閥體材質	Maximum Pressure 最大壓力 bar	Weight 重量 Kg
Aluminum (standard) 鋁 (標準)	240 (3481 psi)	2.29 (5.05 lbs)
Nodular Ductile-Iron 球墨鑄鐵	350 (5076 psi)	5.24 (11.55 lbs)
Steel 鋼	350 (5076 psi)	5.24 (11.55 lbs)

SPECIFICATIONS 規格

Model Number 型式號碼	Operating Pressure 操作壓力 bar	Flow 流量 lpm	Pilot Ratio 引導比例	Weight 重量 Kg
VCKD-06	350 (5076 psi)	200 (52.83 gpm)	3:1	5.24 (11.55 lbs)
Fluid Type 流體型式		ISO VG 32, 46, 68		
Viscosity 黏性 cSt		10~400 (59~1854 SSU)		
Operating Temperature 操作溫度 °C		-30~100 (-22~212°F)		
Contamination Level 污染標準		ISO4406. 20/18/15 NAS1638. 9		

HOW TO ORDER 編號說明

1	2	3	4	5
VCKD	06	*	*	*

1 VALVE SERIES 系列名稱

VCKD= Cartridge Pilot Operated Check Valves
插入式引導止逆閥

2 SUBPLATE MOUNTING SIZE 稱呼口徑

06: 3/4"

3 PORTS DIMENSIONS 接口尺寸

A: 1"
B: 3/4"

4 THREADED TYPE 螺紋規格

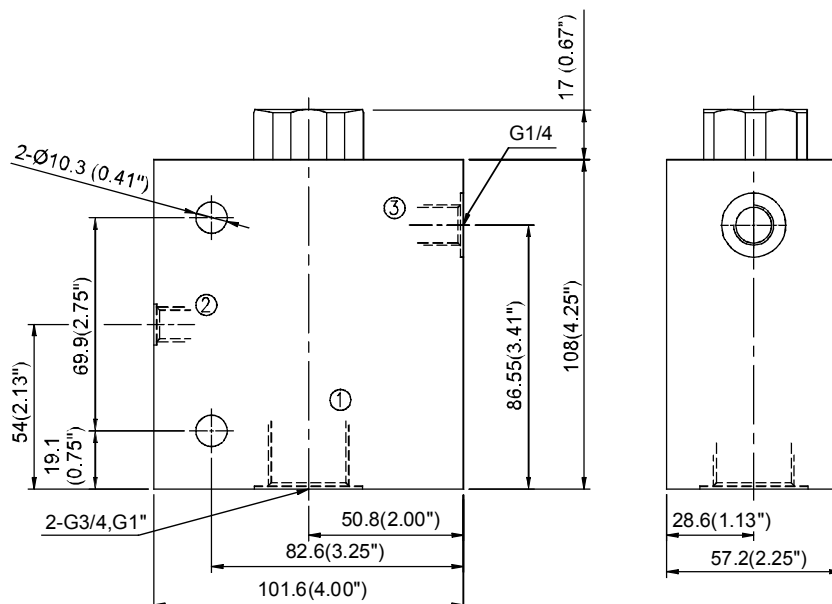
1P: PT 3G: PF(G) 5B: BSP
2N: NPT 4A: SAE

5 BODY MATERIAL 閥體材質

A: Aluminum 鋁合金
D: Nodular Ductile-Iron 球墨鑄鐵
S: Steel 鋼質

DIMENSIONS 外型尺寸圖

外型尺寸圖



D
616

VCKD