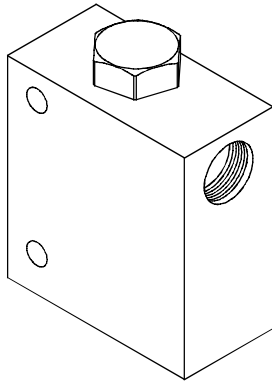


DIRECTIONAL VALVES 方向閥

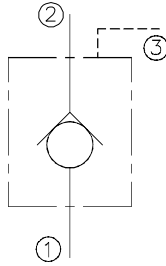
VCKD SERIES CARTRIDGE PILOT OPERATED CHECK VALVES VCKD系列插入式引導止逆閥

◆ MODEL 型 式

VCKD-02



◆ CONTROL PORT(S) 動作形式



Body Material 閥體材質	Maximum Pressure 最大壓力 bar	Weight 重量 Kg
Aluminum (standard) 鋁 (標準)	240 (3481 psi)	0.56 (1.23 lbs)
Nodular Ductile-Iron 球墨鑄鐵	350 (5076 psi)	1.28 (2.82 lbs)
Steel 鋼	350 (5076 psi)	1.28 (2.82 lbs)

◆ SPECIFICATIONS 規 格

Model Number 型式號碼	Operating Pressure 操作壓力 bar	Flow 流量 lpm	Pilot Ratio 引導比例	Weight 重量 Kg
VCKD-02	350 (5076 psi)	60 (15.85 gpm)	3:1	1.28 (2.82 lbs)
Fluid Type 流體型式		ISO VG 32, 46, 68		
Viscosity 黏性 cSt		10~400 (59~1854 SSU)		
Operating Temperature 操作溫度 °C		-30~100 (-22~212°F)		
Contamination Level 污染標準		ISO4406. 20/18/15 NAS1638. 9		

◆ HOW TO ORDER 編號說明

1	2	3	4	5
VCKD	02	*	*	*

1 VALVE SERIES 系列名稱

VCKD= Cartridge Pilot Operated Check Valves
插入式引導止逆閥

2 SUBPLATE MOUNTING SIZE 稱呼口徑

02

3 PORTS DIMENSIONS 接口尺寸

A: 3/8
B: 1/2

4 THREADED TYPE 螺紋規格

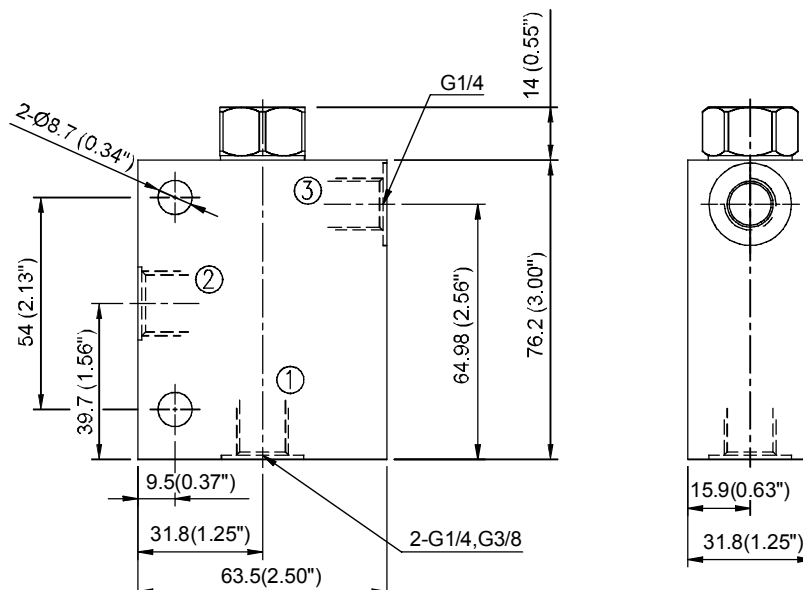
1P: PT 3G: PF(G) 5B: BSP
2N: NPT 4A: SAE

5 BODY MATERIAL 閥體材質

A: Aluminum 鋁合金
D: Nodular Ductile-Iron 球墨鑄鐵
S: Steel 鋼質

◆ DIMENSIONS 外型尺寸圖

外型尺寸圖



D
614

VCKD