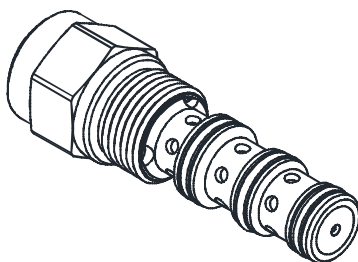
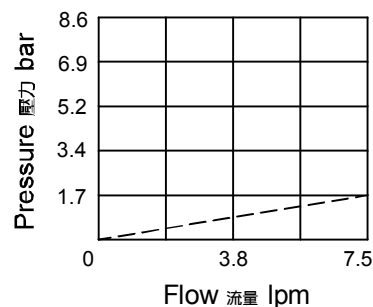


◆ MODEL 型 式

VBV10



◆ PERFORMANCE (Cartridge Only) 特性曲線



◆ DESCRIPTION 說 明

Cartridge-style, spool-type, hydraulic directional valve which operates by pressure-to-shift spring return. It is normally used to release a spring-applied brake whenever hydraulic power is directed to move a load.

插裝式液壓方向閥，壓力換向，彈簧復位，當需要液壓直接移動負載時，此閥通常用來釋放彈簧加載的制動器。

A: The spool has moved far enough to close 2 to 3 flow. While opening the higher pressure of 1 or 4 to 2.

閥芯移動關閉2和3的通道，而使壓力較大的1或4與2接通。

B: The spool has moved far enough to close 2 to 3 flow. While opening the higher pressure of 4 to 2.

閥芯移動關閉2和3的通道，同時接通壓力較高的4流向2。

◆ SPECIFICATIONS 規 格

Model Number 型 式 號 碼	Maximum Pressure 最大壓力 bar	Maximum Flow 最大流量 Lpm	Weight 重 量 Kg
VBV-10	250 (3626 psi)	7.5 (1.98 gpm)	0.16 (0.35 lbs)
Fluid Type 流 體 型 式		ISO VG 32,46,68	
Viscosity 黏 性 cSt		10~400 (59~1854SSU)	
Operating Temperature 操 作 溫 度 °C		-30~100 (-22~212°F)	
Contamination Level 污 染 標 準		ISO4406. 20/18/15 NAS1638. 9	

◆ HOW TO ORDER 編號說明

1	2	3	4
VBV	10	A	*

1 VALVE SERIES 系列名稱

VBV= Cartridge Type Brake Release Valve
插入式制動釋放閥

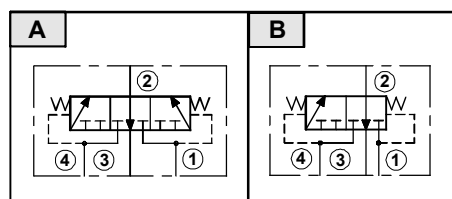
4 SEALS 密封材料

Non : NBR (Standard) 無記號：丁腈橡膠(標準型)
V : VITON V : 氟橡膠

2 SUBPLATE MOUNTING SIZE 稱呼口徑

Size : 10
Cavity 孔口: CS10-4N
See Appendices-A 見附錄A
For Manifold See Appendices-B 油路板見附錄B

3 CONTROL PORT(S) TYPE 動作形式選擇



◆ DIMENSIONS 外型尺寸圖

