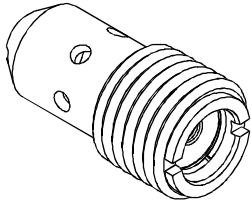


◆ MODEL 型式

VIFC-140/380/120



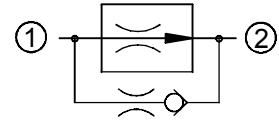
◆ DESCRIPTION 說明

A screw-in insert type, 2-way pressure compensated flow control valve.

The flow rate of this valve in the 1 to 2 flow path is largely independent of the system pressure and is determined by the dimension of a calibrated orifice. The valve cannot be adjusted for variable flow output. Free flow in the 2 to 1 path is allowed and not pressure compensated.

插入式二路壓力補償流量控制閥。
此產品的流量在 1 到 2 的流動路徑，在很大程度上是分開的。
壓力是由阻尼孔做決定，這個閥沒辦法調整做為可變流量輸出。
從 2 到 1 路徑自由流是可行的，但沒有壓力補償。

◆ CONTROL PORT(S) 動作形式



◆ SPECIFICATIONS 規格

Model Number 型式號碼	Maximum Pressure 最大壓力 bar	Flow 流量 Lpm	Weight 重量 Kg
VIFC-140	210 (3046psi)	Non-adjustable 不可調壓 (See below) 見下方	0.02 (0.04 lbs)
VIFC-380			0.03 (0.07 lbs)
VIFC-120			0.05 (0.11 lbs)
Fluid Type 流體型式		ISO VG 32, 46, 68	
Viscosity 黏性 cSt		10~400 (59~1854 SSU)	
Operating Temperature 操作溫度 °C		-30~100 (-22~212°F)	
Contamination Level 污染標準		ISO4406. 20/18/15 NAS1638. 9	

◆ HOW TO ORDER 編號說明

1	2	3
VIFC	140	01

1 VALVE SERIES 系列名稱

VIFC = Buried Type Pressure Compensated Flow Control Valves

埋入式壓力補償流量控制閥

2 SUBPLATE MOUNTING SIZE 稱呼口徑

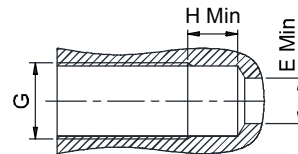
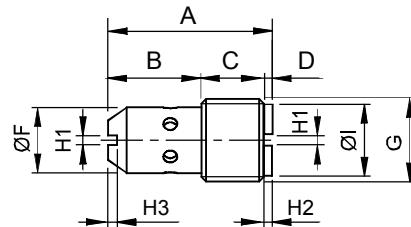
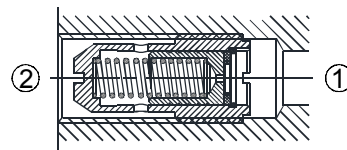
140=G 1/4" 120=G 1/2"
380=G 3/8"

3 FLOW OPTION 流量選擇

At 100 bar (1450 psi) flow range (±10%)
在 100 bar (1450 psi) 時流量範圍 (±10%)

Code 編碼	FLOW 流量 lpm		
	G140	G380	G120
01	1 (0.3 gpm)	—	—
02	2 (0.5 gpm)	—	—
03	3 (0.8 gpm)	—	—
04	4 (1.1 gpm)	4 (1.1 gpm)	—
05	5 (1.3 gpm)	5 (1.3 gpm)	—
06	6 (1.6 gpm)	6 (1.6 gpm)	—
07	7 (1.9 gpm)	—	—
08	8 (2.1 gpm)	8 (2.1 gpm)	—
09	9 (2.4 gpm)	—	—
10	10 (2.6 gpm)	10 (2.6 gpm)	—
12	—	12 (3.2 gpm)	12 (3.2 gpm)
14	—	14 (3.7 gpm)	—
16	—	16 (4.2 gpm)	—
17	—	—	17 (4.5 gpm)
21	—	—	21 (5.5 gpm)
27	—	—	27 (7.1 gpm)
32	—	—	32 (8.5 gpm)
40	—	—	40 (10.6 gpm)
47	—	—	47 (12.4 gpm)

◆ DIMENSIONS 外型尺寸圖



Type	A	B	C	D	E	F
G140	26.1(1.03")	15(0.59")	10(0.39")	1.1(0.04")	8(0.32")	10(0.39")
G380	29.1(1.15")	17.5(0.69")	10.5(0.41")	1.1(0.04")	11(0.43")	14(0.55")
G120	31(1.22")	15(0.59")	13(0.51")	3(0.12")	14(0.55")	18.05(0.71")

Type	G	H	H1	H2	H3	I
G140	G1/4"	5(0.20")	1.5(0.06")	1.1(0.04")	1.5(0.06")	11(0.43")
G380	G3/8"	5(0.20")	1.5(0.06")	1.1(0.04")	1.5(0.06")	14.7(0.58")
G120	G1/2"	5(0.20")	1.5(0.06")	2(0.08")	2(0.08")	18.5(0.73")