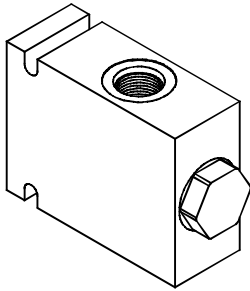


◆ MODEL 型式

VFD-06/08

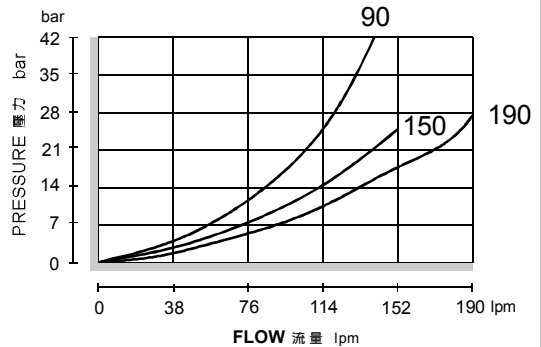


◆ DESCRIPTION 說明

Screw-in, cartridge-style, spool-type flow divider / combiner.
 In the dividing mode, the item will divert input flow from V to C2 and C1, based on the ratio specified, regardless of operating pressure. When the flow direction is reversed the valve will combine flows from C2 and C1 to port V. Synchronizing flow is provided in both the dividing and combining modes at "bottomed" conditions in cylinder applications and at stalled conditions in motor applications.
 螺紋插入式滑閥型分流/集流閥。
 當處於分流模式時，輸入流量從油口V按指定比例分流向油口C2和C1，不受工作壓力影響。當反向流動時，油口C2和C1的流量將匯集到油口3處。在"油缸到達最大行程"和"馬達空轉"情況下可提供分流、集流模式的同步運動。

◆ PERFORMANCE 特性曲線

Test Conditions 測試條件
 Oil Temperature 油溫度: 50°C (122°F)
 Viscosity 黏性: 35 cSt (163 SSU)



◆ SPECIFICATIONS 規格

Model Number 型式號碼	Maximum Pressure 最大壓力 bar	Maximum Flow 最大流量 lpm	Weight 重量 Kg
VFD-06	350 (5076 psi)	220 (58.12 gpm)	4.9 (10.80 lbs)
VFD-08			4.9 (10.80 lbs)
Fluid Type 流體型式		ISO VG 32, 46, 68	
Viscosity 黏性 cSt		10~400 (59~1854 SSU)	
Operating Temperature 操作溫度 °C		-30~100 (-22~212°F)	
Contamination Level 污染標準		ISO4406. 21/19/16 NAS1638,10	

◆ HOW TO ORDER 編號說明

1	2	3	4	5
VFD	06	— 90	— *	— *

1 VALVE SERIES 系列名稱

VFD = FLOW DIVIDER 分流閥

2 SUBPLATE MOUNTING SIZE 稱呼口徑

06=3/4"
 08=1"

3 FLOW SPECIFICATIONS 流量規格

90: 90 l/min 110: 110 l/min
 150: 150 l/min 190: 194 l/min
 220: 220 l/min

Division ratio: 50%-50%
 分流比例
 Flow Accuracy: 3% ~ 10%
 分流精度

4 THREADED TYPE

螺紋規格
 1P: PT 2N: NPT
 3G: PF(G) 4A: SAE
 5B: BSP

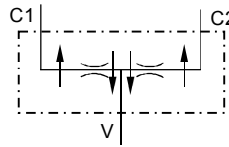
5 BODY MATERIAL 閥體材質

NONE (Standard): Aluminum-alloy
 無 (標準): 鋁合金

D: Nodular Ductile-Iron 球墨鑄鐵
 S: Steel 鋼質

Body Material 閥體材質	Maximum Pressure 最大壓力 bar	Weight 重量 Kg
Aluminum (standard) 鋁 (標準)	250 (3626 psi)	2 (4.40 lbs)
Nodular Ductile-Iron 球墨鑄鐵	350 (5076 psi)	4.9 (10.80 lbs)
Steel 鋼	350 (5076 psi)	4.9 (10.80 lbs)

◆ CONTROL PORT(S) 動作形式



◆ DIMENSIONS 外型尺寸圖

