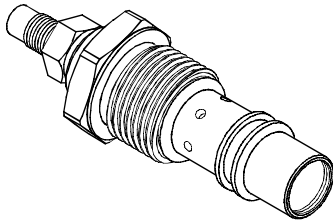


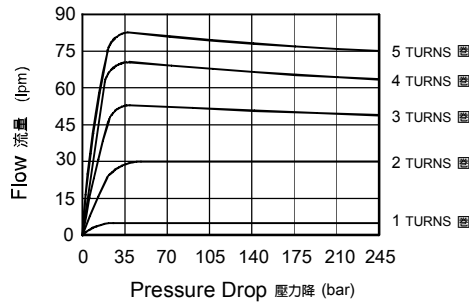
# FLOW CONTROL VALVES 流量控制閥

## VF SERIES CARTRIDGE THROTTLE VALVES (PRESSURE COMPENSATED INCLUDED) VF系列插入式節流閥(附壓力補償)

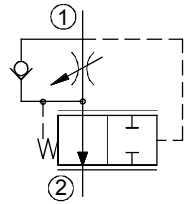
### MODEL 型式 VF12-23



### PERFORMANCE 特性曲線



### CONTROL PORT(S) 動作形式



### DESCRIPTION 說明

A screw-in, cartridge-style, adjustable orifice, pressure-compensated, manually-operated, hydraulic flow regulating valve (restrictive type). The VF maintains a constant flow rate out of ② regardless of load pressure changes in the circuit downstream of ② or upstream of ①. The regulated flow increases from closed to fully open with counter-clockwise rotation of the adjustment screw. The valve will maintain the set flow regardless of pressure variations on the regulated or inlet port. Reverse flow ( ② to ① ) bypasses the control orifice.

本閥為螺紋插裝式，可調節流孔，壓力補償型手動流量調節閥（流量可調型）。

VF型，保持從②流出的流量恒定而不受②口下游回路或①口上游回路的負載壓力變化影響，逆時針旋轉調節器時，流量增大，節流孔從完全閉合到完全打開。該閥保持流量恒定，不受調節口或進口口的壓力變化影響。反向液流（從②流向①）繞過節流孔。

### SPECIFICATIONS 規格

Model Number 型式 號碼	Maximum Pressure 最大壓力 Bar	Operating Pressure 操作壓力 Bar	Control Flow 控制流量 lpm	Weight 重量 Kg
VF12-23	350 (5076 psi)	250 (3625 psi)	0.1~77 (0.03~20.34 gpm)	0.25 (0.55lbs)
Fluid Type 流體型式			ISO VG 32, 46, 68	
Viscosity 黏性 cSt			10~400 (59~1854 SSU)	
Operating Temperature 操作溫度 °C			-30~100 (-22~212°F)	
Contamination Level 污染標準			ISO4406. 20/18/15 NAS1638. 9	

### HOW TO ORDER 編號說明

1	2	3	4
VF12	23	*	*

#### 1 VALVE SERIES 系列名稱

VF = Cartridge Throttle Valves  
(Pressure Compensated Included)  
插入式節流閥(附壓力補償)

#### 2 SUBPLATE MOUNTING SIZE 稱呼口徑

Size : 12  
Cavity 孔口:CS12-2NB  
For Manifold See Appendices-B 油路板見附錄B

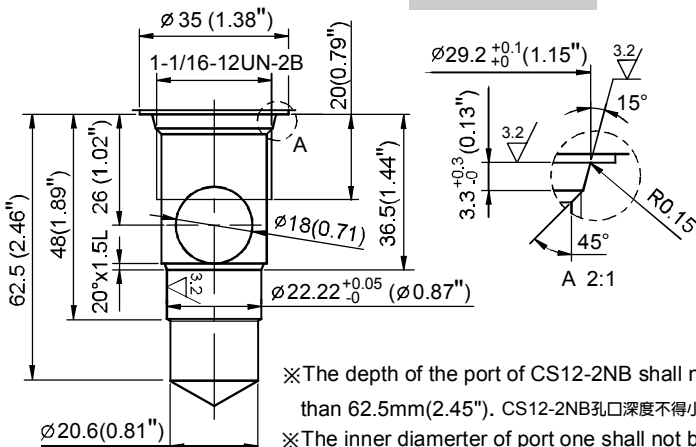
#### 3 ADJUSTMENT OPTION 調整選擇

NONE	NONE: TOOL ADJUST 無：工具調整式	
K	K: HAND-BAR ADJUST K：手把調整式	

#### 4 DESIGN NO 設計編號

### DIMENSIONS 孔口尺寸圖

#### CS12-2NB



※The depth of the port of CS12-2NB shall not be less than 62.5mm(2.45"). CS12-2NB孔口深度不得小於62.5(2.45")  
 ※The inner diameter of port one shall not be less than  $\phi 20.6mm(\phi 0.81")$ . 孔口①內徑不得小於 $\phi 20.6(\phi 0.81")$

### DIMENSIONS 外型尺寸圖

