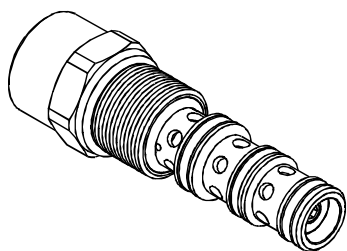
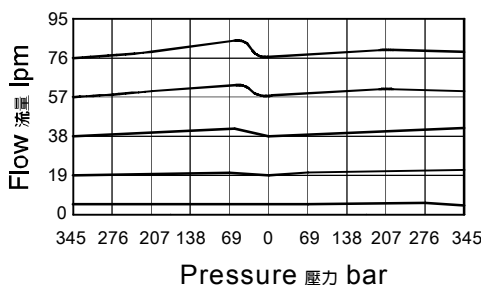


◆ **MODEL 型式**

VEOF-12



◆ **PERFORMANCE 特性曲線**



◆ **DESCRIPTION 說明**

Pressure compensator with dynamic load sense intended to provide priority flow in the required amount, while allowing excess flow to be used for auxiliary functions.

With inlet flow at port ③, will deliver required priority flow at port ④, based on the size of the external orifice, regardless of load pressure. Excess flow exits, or is bypassed, at port ②. Port ① is the load sense port. All ports may be fully pressurized.

具有動態負載感應的壓力補償,用於優先提供需求流量,同時將剩餘的流量用作輔助功能。

油口③進油後,基於外部節流孔的大小,優先輸送必需的流量到④,不受負載壓力變化的影響,剩餘油量流向油口②,①是負載傳感油口,所有油口可以完全受壓。

◆ **SPECIFICATIONS 規格**

Model Number 型式號碼	Operating Pressure 操作壓力 bar	Flow 流量 lpm	Weight 重量 Kg
VEOF-12	350 (5000 psi)	95 (25.10 gpm)	0.45 (0.99 lbs)
Fluid Type 流體型式		ISO VG 32, 46, 68	
Viscosity 黏性 cSt		10~400 (59~1854 SSU)	
Operating Temperature 操作溫度 °C		-30~100 (-22~212°F)	
Contamination Level 污染標準		ISO4406. 20/18/15 NAS1638. 9	

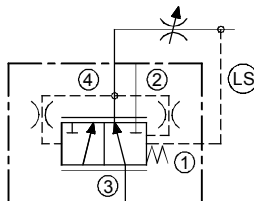
◆ **HOW TO ORDER**

編號說明

1	2	3
VEOF	12	*

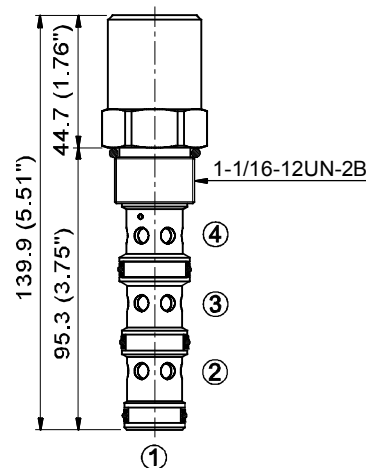
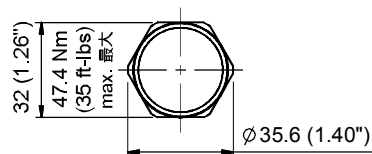
◆ **CONTROL PORT(S)**

動作形式



◆ **DIMENSIONS**

外型尺寸圖



1 VALVE SERIES 系列名稱

VEOF = Cartridge Type Pressure Compensator, High Pressure With Dynamic Load Sense Valves

插入式動態負載感應壓力補償閥(高壓回路)

2 SUBPLATE MOUNTING SIZE 稱呼口徑

Size:12

Cavity 孔口: CS12-4N

See Appendices-A 見附錄A

For Manifold See Appendices-B 油路板見附錄B

3 COMPENSATED PRESSURE 補償壓力

50 : 5.5 bar

100 : 10.3 bar