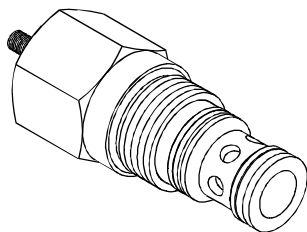


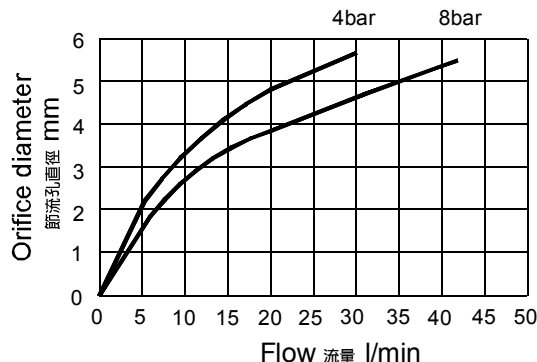
◆ **MODEL 型式**
VEO-10



◆ **DESCRIPTION 說明**

When pressure at ① rises above the selected spring bias pressure against the spool, the valve shifts to allow block from ② to ①. Pilot pressure at ③ is added to the spring bias pressure. The valve may be used in switching or compensation type applications, and will maintain a constant pressure drop across a fixed (or variable) orifice downstream of ① when installed and piloted per the diagram under.
 當①中的壓力上升到超過所選閥芯的彈簧設定壓,閥會移動切換油口,①、②截斷。③中的先導壓力附加彈簧上。這個閥可以用在開關或者補償形式的應用中,並且按照下面的圖表安裝,油口①下方固定節流口可保持恆定壓降。

◆ **PERFORMANCE (Cartridge Only) 特性曲線**



◆ **SPECIFICATIONS 規格**

Model Number 型式號碼	Maximum Pressure 最大壓力 bar	Maximum Flow 最大流量 lpm	Weight 重量 Kg
VEO-10	350 (5076 psi)	30 (7.93 gpm)	0.2(0.55 lbs)
Fluid Type 流體型式		ISO VG 32 , 46 , 68	
Viscosity 黏性 cSt		10~400 (59~1854 SSU)	
Operating Temperature 操作溫度 °C		-30~100 (-22~212°F)	
Contamination Level 污染標準		ISO4406. 20/18/15 NAS1638. 9	

◆ **HOW TO ORDER 編號說明**

1	2	3	4
VEO	10	*	*

1 VALVE SERIES 系列名稱
 VEO= Cartridge Throttle Valves
 (Pressure Compensated Included)
 插入式節流閥(附壓力補償)

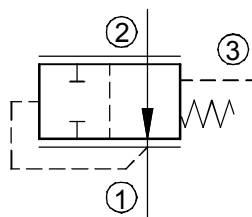
2 SUBPLATE MOUNTING SIZE 稱呼口徑
 Size :10
 Cavity 孔口:CS10-3S
 See Appendices-A 見附錄A
 For Manifold See Appendices-B 油路板見附錄B

3 ADJUSTMENT PRESSURE 壓力調整範圍

Code 編碼	Adjustment pressure 壓力調整範圍
05	2 ~ 8 (bar)

4 DESIGN NO 設計編號

◆ **CONTROL PORT(S) 動作形式**



◆ **DIMENSIONS 外型尺寸圖**

