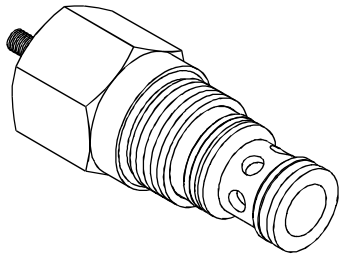


MODEL 型式 VEC-10

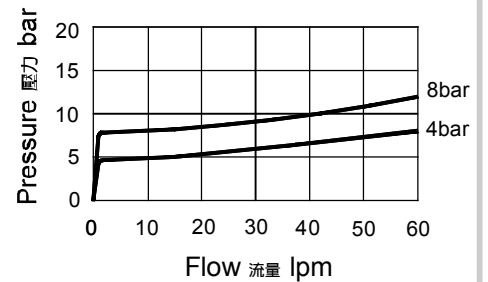


DESCRIPTION 說明

When pressure at ① rises above the selected spring bias pressure against the spool, the valve shifts to allow flow from ① to ②. Pilot pressure at ③ is added to the spring bias pressure. The valve may be used in switching or compensation type applications.

當①中的壓力上升到超過彈簧開啟壓力，閥芯移動允許從①到②流動。③中的先導壓力附加到彈簧壓力上。這個閥可以應用在開關或者補償之類的場合。

PERFORMANCE (Cartridge Only) 特性曲線



SPECIFICATIONS 規格

Model Number 型式號碼	Maximum Pressure 最大壓力 bar	Ratio of Poppet Area 面積比	Maximum Flow 最大流量 lpm	Weight 重量 Kg
VEC-10	350 (5076psi)	1 : 1	60 (15.85 gpm)	0.2 (0.55 lbs)
Fluid Type 流體型式		ISO VG 32, 46, 68		
Viscosity 黏性 cSt		10~400 (59~1854 SSU)		
Operating Temperature 操作溫度 °C		-30~100 (-22~212°F)		
Contamination Level 污染標準		ISO4406. 20/18/15 NAS1638. 9		

HOW TO ORDER 編號說明

1	2	3	4
VEC	10	*	*

1 VALVE SERIES 系列名稱

VEC= Cartridge Throttle Valves
(Pressure Compensated Included)
插入式節流閥(附壓力補償)

2 SUBPLATE MOUNTING SIZE 稱呼口徑

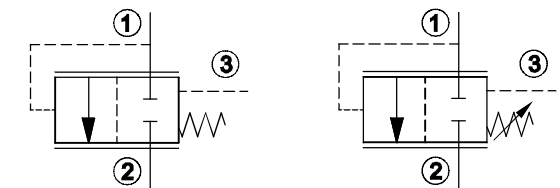
Size :10
Cavity 孔口:CS10-3S
See Appendices-A 見附錄A
For Manifold See Appendices-B 油路板見附錄B

3 SPRING PRESSURE 彈簧壓力

	Code 編碼	Spring pressure 彈簧壓力	
Fixed pressure 固定壓力	50	5 (bar)	
	80	8 (bar)	
	Spring pressure tolerance ±15% 彈簧壓力公差值±15%		
Adjustable pressure 可調壓力	Code 編碼	Adjustment pressure 壓力調整範圍	
	M15	2 ~ 8 (bar)	

4 DESIGN NO 設計編號

CONTROL PORT(S) 動作形式



Fixed pressure
固定壓力

Adjustable pressure
可調壓力

DIMENSIONS 外型尺寸圖

