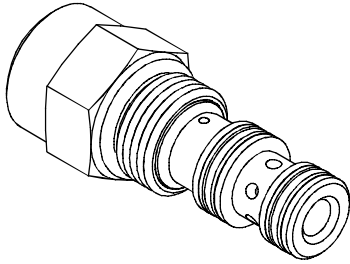


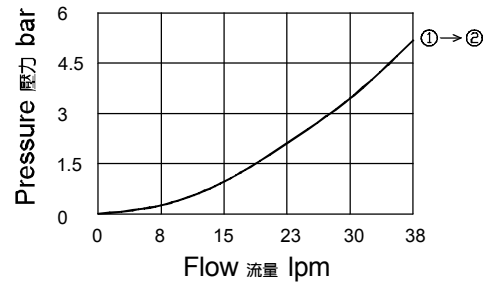
◆ **MODEL** 型 式
VEC-08



◆ **DESCRIPTION** 說明

When pressure at ① rises above the selected spring bias pressure against the spool, the valve shifts to allow flow from ① to ②. Pilot pressure at ③ is added to the spring bias pressure. The valve may be used in switching or compensation type applications. 當①中的壓力上升到超過彈簧開啟壓力, 閥芯移動允許從①到②流動。③中的先導壓力附加到彈簧壓力上。這個閥可以應用在開關或者補償之類的場合。

◆ **PERFORMANCE**(Cartridge Only)
特性曲線



◆ **SPECIFICATIONS** 規 格

Model Number 型式號碼	Maximum Pressure 最大壓力 bar	Ratio of Poppet Area 面積比	Maximum Flow 最大流量 lpm	Weight 重量 Kg
VEC-08	350 (5076psi)	1 : 1	38 (10.04 gpm)	0.11 (0.25 lbs)
Fluid Type 流體型式		ISO VG 32 , 46 , 68		
Viscosity 黏性 cSt		10~400 (59~1854 SSU)		
Operating Temperature 操作溫度 °C		-30~100 (-22~212°F)		
Contamination Level 污染標準		ISO4406. 20/18/15 NAS1638. 9		

◆ **HOW TO ORDER** 編號說明

1	2	3	4
VEC	08	*	*

1 VALVE SERIES 系列名稱
VEC= Cartridge Throttle Valves
(Pressure Compensated Included)
插入式節流閥(附壓力補償)

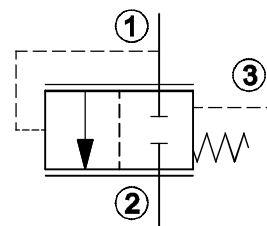
2 SUBPLATE MOUNTING SIZE 稱呼口徑
Size :08
Cavity 孔口:CS08-3N
See Appendices-A 見附錄A
For Manifold See Appendices-B 油路板見附錄B

3 SPRING PRESSURE 彈簧壓力

Fixed pressure 固定壓力	Code 編碼	Spring pressure 彈簧壓力	
	05	0.5 (bar)	
	20	2.8 (bar)	
	50	5.0 (bar)	
	100	10.5 (bar)	
Spring pressure tolerance ±15% 彈簧壓力公差值±15%			

4 DESIGN NO 設計編號

◆ **CONTROL PORT(S)**
動作形式



◆ **DIMENSIONS**
外型尺寸圖

