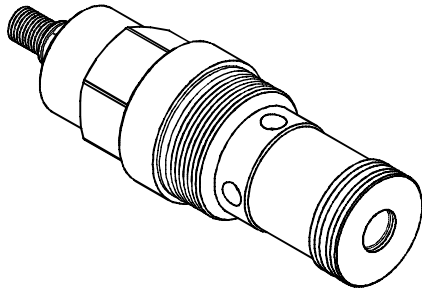
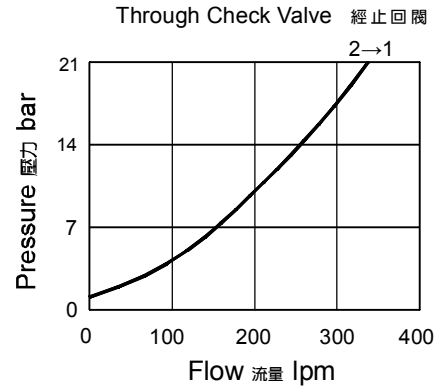


◆ **MODEL** 型式
VCF-10



◆ **PERFORMANCE**(Cartridge Only)
特性曲線



◆ **SPECIFICATIONS** 規格

Model Number 型式號碼	Maximum Pressure 最大壓力 bar	Maximum Flow 最大流量 Lpm	Control Flow 控制流量 Lpm	Weight 重量 Kg
VCF-10	350 (5076 psi)	320 (84.54 gpm)	1~200 (0.26~82.83 gpm)	1.3 (2.87 lbs)
Fluid Type 流體型式		ISO VG 32,46,68		
Viscosity 黏性 cSt		10~400 (59~1854SSU)		
Operating Temperature 操作溫度 °C		-30~100 (-22~212°F)		
Contamination Level 污染標準		ISO4406. 20/18/15 NAS1638. 9		

◆ **HOW TO ORDER** 編號說明

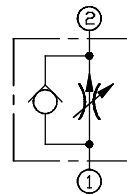
1	2	3
VCF	10	*

※ Accurate pressure compensated control requires that a 200 psi minimum pressure differential be maintained across the valve.
為確保控流精度,應維持最小閥壓損14bar

1 VALVE SERIES 系列名稱

VCF= Fully Adjustable Pressure Compensated
With Reverse Flow Check
(Unidirectional Valves Included)
全調型壓補流量閥 (附單向閥)

◆ **CONTROL PORT(S)** 動作形式



2 SUBPLATE MOUNTING SIZE 稱呼口徑

10: T-18A
Cavity 孔口:CST-18A
See Appendices-A 見附錄A
For Manifold See Appendices-B 油路板見附錄B

3 ADJUSTMENT OPTION 調整選擇

NONE	NONE:TOOL ADJUST 無:工具調整式	
K	K:HAND-BAR ADJUST K:手把調整式	
KT	KT:HAND-BAR ADJUST (Three-winged) KT:手把調整式(三翼)	

◆ **DIMENSIONS** 外型尺寸圖

