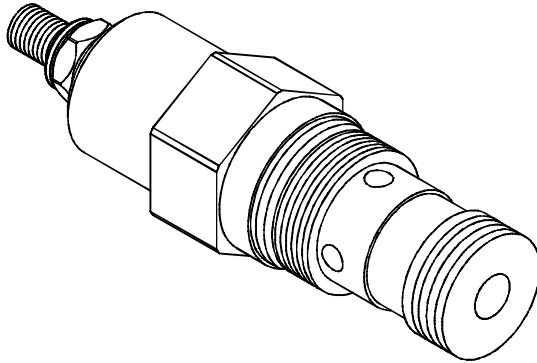


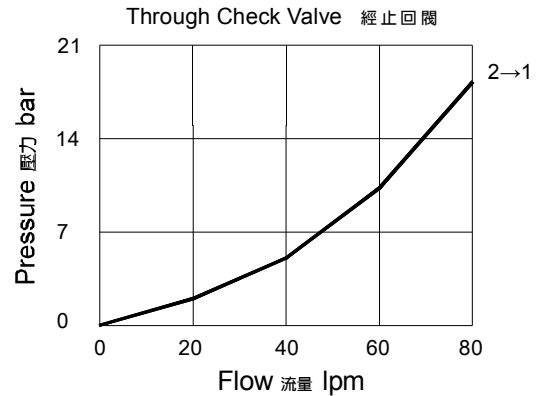
◆ **MODEL 型 式**

VCF-03



◆ **PERFORMANCE(Cartridge Only)**

特性曲線



◆ **SPECIFICATIONS 規 格**

Model Number 型式號碼	Maximum Pressure 最大壓力 bar	Maximum Flow 最大流量 Lpm	Control Flow 控制流量 Lpm	Weight 重量 Kg
VCF-03	350 (5076 psi)	80 (21.13 gpm)	0.4~45 (0.11~11.89 gpm)	0.28 (0.62 lbs)
Fluid Type 流體型式		ISO VG 32,46,68		
Viscosity 黏性 cSt		10~400 (59~1854SSU)		
Operating Temperature 操作溫度 °C		-30~100 (-22~212°F)		
Contamination Level 污染標準		ISO4406. 20/18/15 NAS1638. 9		

◆ **HOW TO ORDER 編號說明**

1	2	3	4
VCF	03	C	*

※ Accurate pressure compensated control requires that a 200 psi minimum pressure differential be maintained across the valve.
為確保控流精度,應維持最小閥壓損14bar

1 VALVE SERIES 系列名稱

VCF= Fully Adjustable Pressure Compensated With Reverse Flow Check (Unidirectional Valves Included)
全調型壓補流量閥 (附單向閥)

2 SUBPLATE MOUNTING SIZE 稱呼口徑

03: T-5A
Cavity 孔口:CST-5A
See Appendices-A 見附錄A
For Manifold See Appendices-B 油路板見附錄B

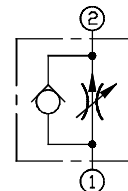
3 FLOW CONTROL OPTION 控制流量選項

A : 15 l/min
B : 30 l/min
C : 45 l/min

4 ADJUSTMENT OPTION 調整選擇

NONE	NONE:TOOL ADJUST 無：工具調整式	
K	K:HAND-BAR ADJUST K：手把調整式	
KT	KT:HAND-BAR ADJUST (Three-winged) KT：手把調整式(三翼)	

◆ **CONTROL PORT(S) 動作形式**



◆ **DIMENSIONS 外型尺寸圖**

