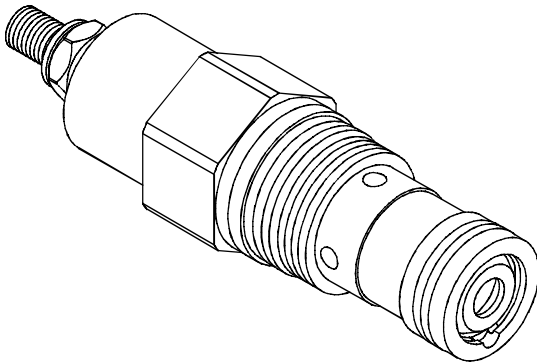


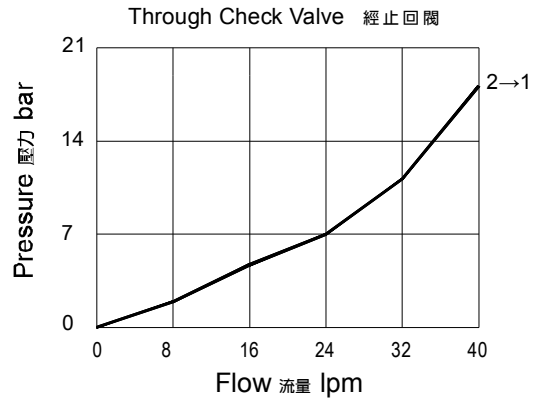
MODEL 型式

VCF-02



PERFORMANCE (Cartridge Only)

特性曲線



SPECIFICATIONS 規格

Model Number 型式號碼	Maximum Pressure 最大壓力 bar	Maximum Flow 最大流量 Lpm	Control Flow 控制流量 Lpm	Weight 重量 Kg
VCF-02	350 (5076 psi)	35 (9.25 gpm)	0.4~25 (0.11~6.60 gpm)	0.15 (0.33 lbs)
Fluid Type 流體型式		ISO VG 32,46,68		
Viscosity 黏性 cSt		10~400 (59~1854SSU)		
Operating Temperature 操作溫度 °C		-30~100 (-22~212°F)		
Contamination Level 污染標準		ISO4406. 20/18/15 NAS1638. 9		

※ Accurate pressure compensated control requires that a 200 psi minimum pressure differential be maintained across the valve.
為確保控流精度,應維持最小閥壓損14bar

HOW TO ORDER 編號說明

1	2	3	4
VCF	02	A	*

1 VALVE SERIES 系列名稱

VCF= Fully Adjustable Pressure Compensated
With Reverse Flow Check
(Unidirectional Valves Included)
全調型壓補流量閥 (附單向閥)

2 SUBPLATE MOUNTING SIZE 稱呼口徑

02: T-13A
Cavity 孔口: CST-13A
See Appendices-A 見附錄A
For Manifold See Appendices-B 油路板見附錄B

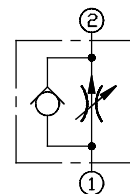
3 FLOW CONTROL OPTION 控制流量選項

A : 25 l/min
B : 8 l/min
C : 4 l/min

4 ADJUSTMENT OPTION 調整選擇

NONE	NONE: TOOL ADJUST 無: 工具調整式	
K	K: HAND-BAR ADJUST K: 手把調整式	
KT	KT: HAND-BAR ADJUST (Three-winged) KT: 手把調整式 (三翼)	

CONTROL PORT(S) 動作形式



DIMENSIONS 外型尺寸圖

