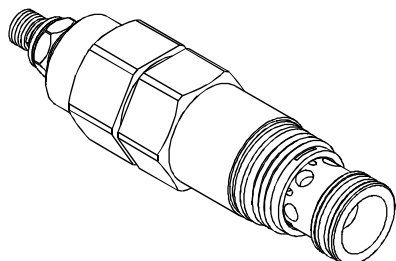


◆ **MODEL 型式**

VSX-5A



◆ **DESCRIPTION 說明**

Atmospherically referenced, direct-acting sequence valves will supply a secondary circuit with flow once the pressure at the inlet (port 1) has exceeded the valve setting. The pressure setting of this sequence valve controls the pressure at port 1 relative to the atmospheric vent. Suitable for use in load holding applications.

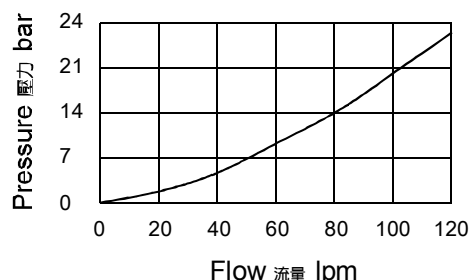
Maximum valve leakage at reset 0.7cc/mim..

透氣型,直動式順序閥將在進口(口1)壓力超過閥的設定之後向次級迴路供油。順序閥的設定將控制與透氣口壓力相關的口1壓力。

適合使用在負載鎖緊應用中。

復位時最大洩漏量0.7cc/mim.

◆ **PERFORMANCE 特性曲線**



◆ **SPECIFICATIONS 規格**

Model Number 型式號碼	Maximum Pressure 最大壓力 bar	Maximum Flow 最大流量 lpm	Weight 重量 Kg
VSX-5A	350 (5076 psi)	120 (31.70 gpm)	0.42 (0.93 lbs)
Fluid Type 流體型式		ISO VG 32 , 46 , 68	
Viscosity 黏性 cSt		10~400 (59~1854 SSU)	
Operating Temperature 操作溫度 °C		-30~100 (-22~212°F)	
Contamination Level 污染標準		ISO4406. 20/18/15 NAS1638. 9	

◆ **HOW TO ORDER 編號說明**

1	2	3	4
VSX	5A	*	*

1 VALVE SERIES 系列名稱

VSX= Cartridge Type Direct Acting Sequence Valve (Atmospherically Referenced)
插入式直動型順序閥(大氣參考)

2 SUBPLATE MOUNTING SIZE: 稱呼口徑

5A:T-5A
Cavity 孔口:CST-5A
See Appendices-A 見附錄A
For Manifold See Appendices-B 油路板見附錄B

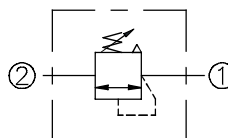
3 ADJUSTMENT PRESSURE 壓力調整範圍

Code 編碼	Adjustment pressure 壓力調整範圍
05	14 ~ 55 (bar)
10	20 ~ 105 (bar)
20	35 ~ 210 (bar)
30	55 ~ 315 (bar)
40	140 ~ 420 (bar)

4 ADJUSTMENT OPTION 調整選擇

NONE	NONE:TOOL ADJUST 無：工具調整式	
C	C:TAMPER RESISTANT COVER C：防調封蓋	
K	K:HAND-BAR ADJUST K：手把調整式	

◆ **CONTROL PORT(S)** 動作形式



◆ **DIMENSIONS** 外型尺寸圖

