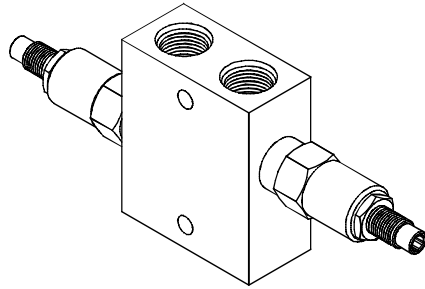


PRESSURE CONTROL VALVES 壓力控制閥

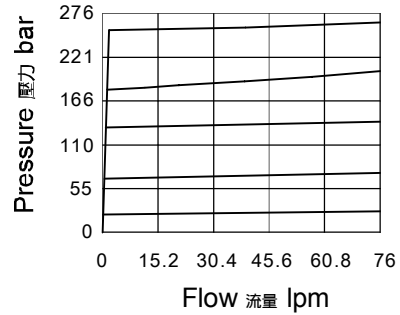
VRVD SERIES CROSS-OVER RELIEF, DIRECT-ACTING POPPET VRVD 系列雙向溢流閥(直動式)

◆ MODEL 型式

VRVD10-22



◆ PERFORMANCE (Cartridge Only) 特性曲線



◆ SPECIFICATIONS 規格

Model Number 型式號碼	Operating Pressure 操作壓力 bar	Flow 流量 lpm	Weight 重量 Kg
VRVD10-22	340 (4931psi)	70 (18.49 gpm)	2.5 (5.51 lbs)
Fluid Type 流體型式		ISO VG 32, 46, 68	
Viscosity 黏性 cSt		10~400 (59~1854 SSU)	
Operating Temperature 操作溫度 °C		-30~100 (-22~212°F)	
Contamination Level 污染標準		ISO4406. 20/18/15 NAS1638. 9	

◆ HOW TO ORDER 編號說明

1	2	3	4	5	6
VRVD	10	15	*	*	22



Body Material 閥體材料	Maximum Pressure 最大壓力 bar	Weight 重量 Kg
Aluminum (standard) 鋁 (標準)	240 (3481 psi)	0.66 (1.44 lbs)
Steel 鋼	350 (5076 psi)	1.72 (3.79 lbs)

1 VALVE SERIES 系列名稱

VRVD= Cross-over Relief,
Direct-acting Poppet
雙向溢流閥(直動式)

2 SUBPLATE MOUNTING SIZE 稱呼口徑

10=1/2

3 ADJUSTMENT PRESSURE 壓力調整範圍

Code 編碼	Adjustment pressure 壓力調整範圍
08	10 ~ 80 (bar)
15	17 ~ 150 (bar)
24	20 ~ 220 (bar)
34	34 ~ 340 (bar)

4 ADJUSTMENT OPTION 調整選擇

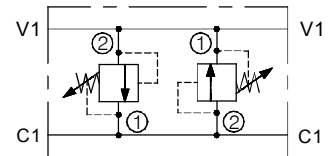
NONE	NONE: TOOL ADJUST 無: 工具調整式	
K	K: HAND-BAR ADJUST K: 手把調整式	

5 THREADED TYPE 螺紋規格

1P: PT 2N: NPT 3G: PF(G)
4A: SAE 5B: BSP

6 DESIGN NO 設計編號

◆ CONTROL PORT(S) 動作形式



◆ DIMENSIONS 外型尺寸圖

