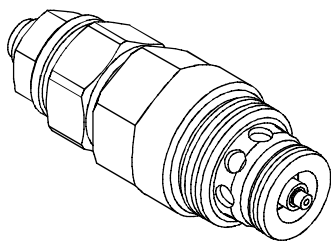


◆ **MODEL 型 式**

VRV-16K



◆ **DESCRIPTION 說明**

Pilot-operated, two-stage, hydraulic relief valve with reverse flow check valve. It is intended for use as a pressure limiting device in demanding hydraulic circuits which require fast response, low hysteresis, low leakage, low pressure overshoot and reverse free flow features. The flow from 1 to 2 until sufficient pressure is present at 1 to force the pilot stage open, allowing the main stage to shift, opening 1 to 2.

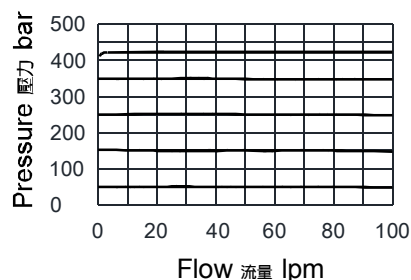
The relief flow path is from 1 to 2. Reverse flow, from 2 to 1, occurs when the pressure at 2 is at least 2.1 bar (30 psi) higher than at 1.

二級先導型溢流閥，帶反向單向閥，作為壓力限制裝置用於要求快速反應、低遲滯、低泄漏、壓力超調小及反向導通的液壓回路。

常態下從1流向2封閉，直到1處受到足夠的液壓力使先導閥開啟，再推動主閥芯移動，使油液從1流向2。溢流時油液從1流向2。當作用於2的壓力比1處高出2.1 bar (30 psi) 以上時，反向1導通，油液從2流向1。

◆ **PERFORMANCE (Cartridge Only)**

特性曲線



◆ **SPECIFICATIONS 規 格**

Model Number 型式號碼	Operating Pressure 操作壓力 bar	Flow 流量 lpm	Weight 重量 Kg
VRV-16K	420 (6092 psi)	100 (26.42 gpm)	0.21 (0.46 lbs)
<b>Fluid Type</b> 流體型式		ISO VG 32, 46, 68	
<b>Viscosity</b> 黏性 cSt		10~400 (59~1854 SSU)	
<b>Operating Temperature</b> 操作溫度 °C		-30~100 (-22~212°F)	
<b>Contamination Level</b> 污染標準		ISO4406. 20/18/15 NAS1638. 9	

◆ **HOW TO ORDER 編號說明**

<b>1</b>	<b>2</b>	<b>3</b>	<b>4</b>
VRV	16K	*	20

**1 VALVE SERIES** 系列名稱  
VRV= Relief, Pilot-operated Poppet  
先導式溢流閥

**2 SUBPLATE MOUNTING SIZE** 稱呼口徑  
SIZE :16K  
Cavity 孔口: CS16K-2N  
See Appendices-A 見附錄A  
For Manifold See Appendices-B 油路板見附錄B

**3 ADJUSTMENT PRESSURE** 壓力調整範圍

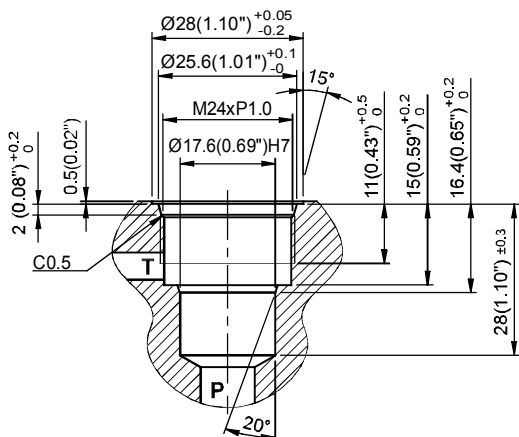
Code 編碼	Adjustment pressure 壓力調整範圍
31	27 ~ 420 (bar)

**4 DESIGN NO** 設計編號

◆ **CAVITY DIMENSIONS**

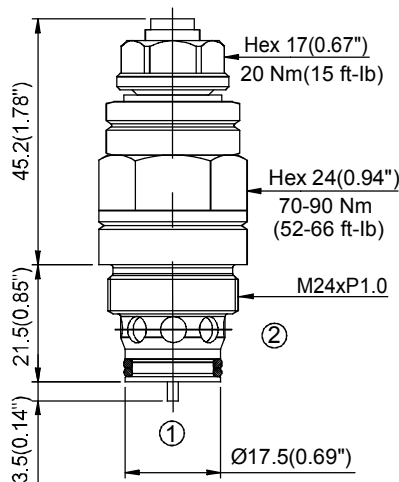
孔口尺寸圖

CS16K-2N



◆ **DIMENSIONS**

外型尺寸圖



◆ **CONTROL PORT(S)**

動作形式

