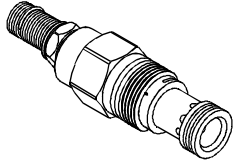


### ◆ MODEL 型式 VRQ-03



### ◆ DESCRIPTION 說明

Kick-down relief cartridges act similar to a circuit breaker in an electrical system. The valves will kick completely open and remain open once the pressure at the port 1 (inlet) exceeds the valve setting, creating an unrestricted flow path from port 1 to port 2 (tank). The valve remains open as long as the pressure at port 1 exceeds the pressure at port 2. To reset the valve, flow from port 1 to port 2 must cease and pressure at port 2 must be equal to or greater than the pressure at port 1.

Not suitable for use in load holding applications. Intended for use on the actuator side of the system as flow through the valve must cease for the valve to reset. If used on the pump side of a system, pump flow must be shut off for the valve to reset.

自動跳合溢流閥與電路中的斷路器功能類似。當口1(進口)壓力超過閥的設定值,此類閥會完全打開並且保持全開狀態,液流從口1到油箱(口2)自由流通。只要口1壓力超過口2壓力,閥就會一直保持打開狀態。要想重新設定此類閥,口1到口2的液流必須停止而且口2的壓力必須等於或者大於口1的壓力。

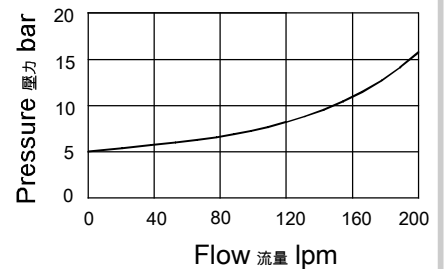
不適合用在負載鎖緊應用中。

如應用在系統的驅動端側,通過閥的液流必須停止,閥才能回座。

如果應用在一個系統的泵端側,泵必須關閉,閥才能回座。

### ◆ PERFORMANCE(Cartridge Only)

特性曲線



### ◆ SPECIFICATIONS 規格

Model Number 型式號碼	Maximum Pressure 最大壓力 bar	Maximum Flow 最大流量 Lpm	Weight 重量 Kg
VRQ-03	350 (5076psi)	200 (52.83gpm)	0.27(0.59lbs)
Fluid Type 流體型式		ISO VG 32,46,68	
Viscosity 黏性 cSt		10~400 (59~1854SSU)	
Operating Temperature 操作溫度 °C		-30~100 (-22~212°F)	
Contamination Level 污染標準		ISO4406. 20/18/15 NAS1638. 9	

### ◆ HOW TO ORDER 編號說明

1	2	3	4	5
VRQ	03	*	*	*

**1 VALVE SERIES 系列名稱**  
VRQ = Cartridge Type Kick-down Relief Valves  
插入式卸壓型調壓閥

**2 SUBPLATE MOUNTING SIZE 稱呼口徑**  
03:T-3A  
Cavity 孔口:CST-3A  
See Appendices-A 見附錄A  
For Manifold See Appendices-B 油路板見附錄B

**3 ADJUSTMENT PRESSURE 壓力調整範圍**

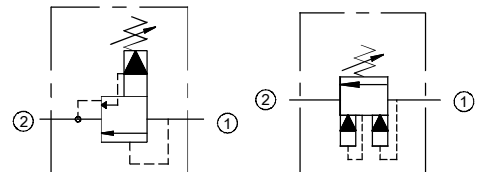
Code 編碼	Adjustment pressure 壓力調整範圍
06	※ ~ 60 (bar)
10	※ ~ 100 (bar)
20	8 ~ 210 (bar)
30	10 ~ 315 (bar)
40	12 ~ 420 (bar)

**4 ADJUSTMENT OPTION 調整選擇**

NONE	NONE:TOOL ADJUST 無:工具調整式	
K	K:HAND-BAR ADJUST K:手把調整式	

**5 DESIGN NO 設計編號**

### ◆ CONTROL PORT(S) 動作形式



### ◆ DIMENSIONS 外型尺寸圖

