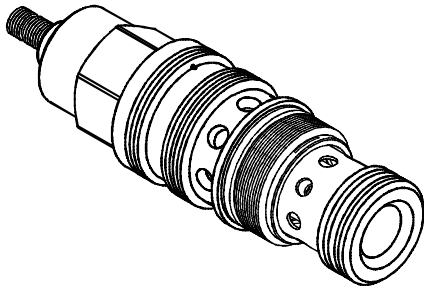
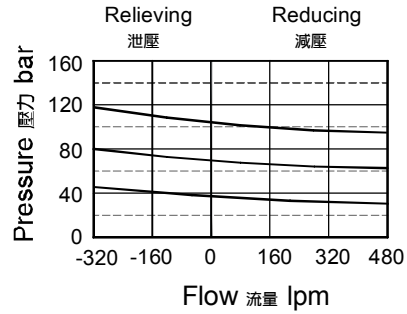


◆ **MODEL** 型 式

VRBT-10



◆ **PERFORMANCE(Cartridge Only)** 特性曲線



◆ **DESCRIPTION** 說明

Pilot-operated pressure reducing/relieving valves reduce a high primary pressure at the inlet (port 2) to a constant reduced pressure at port 1, with a full-flow relief function from port 1 to tank (port 3). Draining the pilot section at port 4 makes these valves insensitive to pressure at tank.

外泄口的溢流型減壓閥將進口(口2)高壓主油路壓力調節減至口1所需的減壓壓力,同時具備從口1到油箱(口3)的全流量溢流功能。外泄口4使閥對油箱的壓力不敏感。

◆ **SPECIFICATIONS** 規 格

Model Number 型式號碼	Maximum Pressure 最大壓力 bar	Maximum Flow 最大流量 Lpm	Weight 重量 Kg
VRBT-10	350 (5076 psi)	320 (84.54 gpm)	1.65 (3.64 lbs)
Fluid Type 流體型式		ISO VG 32,46,68	
Viscosity 黏性 cSt		10~400 (59~1854SSU)	
Operating Temperature 操作溫度 °C		-30~100 (-22~212°F)	
Contamination Level 污染標準		ISO4406. 20/18/15 NAS1638. 9	

◆ **HOW TO ORDER** 編號說明

1	2	3	4
VRBT	10	*	*

1 VALVE SERIES 系列名稱

VRBT= Cartridge Type Balance Valves
(Pilot Operated Reducing/Relieving Valves- External Oil Return)
插入式平衡閥(導壓操作減泄壓閥-外部回油)

2 SUBPLATE MOUNTING SIZE 稱呼口徑

10: T-24A
Cavity 孔口: CST-24A
See Appendices-A 見附錄A
For Manifold See Appendices-B 油路板見附錄B

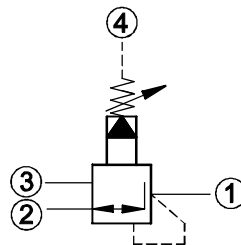
3 ADJUSTMENT PRESSURE 壓力調整範圍

Code 編碼	Adjustment pressure 壓力調整範圍
02	1.7 ~ 28 (bar)
06	1.7 ~ 60 (bar)
10	3.5 ~ 105 (bar)
20	7 ~ 210 (bar)
30	10 ~ 315 (bar)

4 ADJUSTMENT OPTION 調整選擇

NONE	NONE:TOOL ADJUST 無:工具調整式	
K	K:HAND-BAR ADJUST K:手把調整式	

◆ **CONTROL PORT(S)** 動作形式



◆ **DIMENSIONS** 外型尺寸圖

