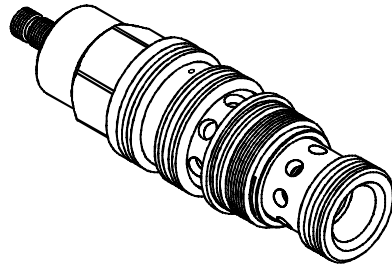


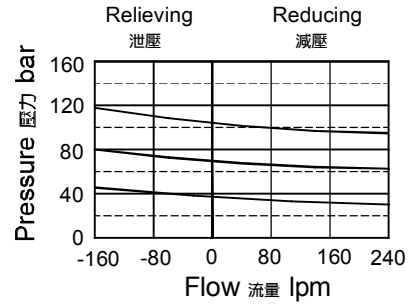
PRESSURE CONTROL VALVES 壓力控制閥

VRBE CARTRIDGE REDUCING / RELIEVING VALVES (EXTERNAL OPERATED) VRBE 系列插入式減泄壓閥(外部引導)

◆ MODEL 型式 VRBE-06



◆ PERFORMANCE (Cartridge Only) 特性曲線



◆ DESCRIPTION 說明

Pilot-operated pressure reducing/relieving valves reduce a high primary pressure at the inlet to a constant reduced pressure at port 1, with a full-flow relief function from port 1 to tank (port 3). The vent port (port 4) can be used as a means for remote control by pilot or 2-way valves.

先導控制式溢流型減壓閥將進口高壓主油路壓力調節減至口1所需的減壓壓力，同時具備從口1到油箱（口3）的全流量溢流功能。排氣口（口4）可以接入其它先導級控制閥或2通閥實現遠端控制。

◆ SPECIFICATIONS 規格

Model Number 型式號碼	Maximum Pressure 最大壓力 bar	Maximum Flow 最大流量 Lpm	Weight 重量 Kg
VRBE-06	350 (5076 psi)	160 (42.27 gpm)	0.75 (1.65 lbs)
Fluid Type 流體型式		ISO VG 32,46,68	
Viscosity 黏性 cSt		10~400 (59~1854SSU)	
Operating Temperature 操作溫度 °C		-30~100 (-22~212°F)	
Contamination Level 污染標準		ISO4406.20/18/15 NAS1638.9	

◆ HOW TO ORDER 編號說明

1	2	3	4
VRBE	06	*	*

1 VALVE SERIES 系列名稱

VRBE= Cartridge Reducing / Relieving Valves
(Pilot Operated Reducing/Relieving Valves- External Operated)
插入式平衡閥(導壓操作減泄壓閥-外部引導)

2 SUBPLATE MOUNTING SIZE 稱呼口徑

06 : T-23A
Cavity 孔口 : CST-23A
See Appendices-A 見附錄A
For Manifold See Appendices-B 油路板見附錄B

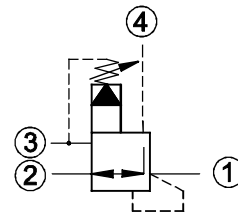
3 ADJUSTMENT PRESSURE 壓力調整範圍

Code 編碼	Adjustment pressure 壓力調整範圍
02	1.7 ~ 28 (bar)
06	1.7 ~ 60 (bar)
10	3.5 ~ 105 (bar)
20	7 ~ 210 (bar)
30	10 ~ 315 (bar)

4 ADJUSTMENT OPTION 調整選擇

NONE	NONE:TOOL ADJUST 無：工具調整式	
K	K:HAND-BAR ADJUST K：手把調整式	

◆ CONTROL PORT(S) 動作形式



◆ DIMENSIONS 外型尺寸圖

