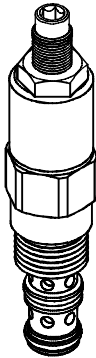


PRESSURE CONTROL VALVES 壓力控制閥

VPR SERIES CARTRIDGE TYPE DIRECT ACTING BALANCE VALVES (REDUCING/RELIEVING VALVES) VPR 系列插入式直動型平衡閥(減泄壓閥)

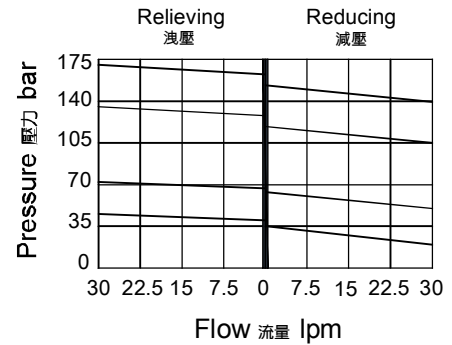
◆ MODEL 型式 VPR-10H



◆ DESCRIPTION 說明

Direct-acting, Spool-type, hydraulic pressure reducing/relieving valve designed to act as a pressure-regulating device for secondary circuits.
直動型滑閥式減壓/溢流閥，作為二級迴路調節裝置用於穩定輸入流量的液壓迴路。

◆ PERFORMANCE 特性曲線



◆ SPECIFICATIONS

Model Number 型式號碼	Operating Pressure 操作壓力 bar	Flow 流量 lpm	Weight 重量 Kg
VPR-10H	207 (3002 psi)	30 (7.93 gpm)	0.26 (0.57 lbs)
Fluid Type 流體型式		ISO VG 32, 46, 68	
Viscosity 黏性 cSt		10~400 (59~1854 SSU)	
Operating Temperature 操作溫度 °C		-30~100 (-22~212°F)	
Contamination Level 污染標準		ISO4406. 20/18/15 NAS1638. 9	

◆ HOW TO ORDER 編號說明

1	2	3	4	5	6
VPR	10H	*	*	20	*

6 SEALS 密封件

Non : NBR (Standard) 無記號：丁腈橡膠(標準型)
HN : HNBR HN: 氫化丁腈橡膠
V : VITON V: 氟橡膠

1 VALVE SERIES 系列名稱

VPR = Cartridge Type Direct Acting Balance Valves
(Reducing/Relieving Valves)
插入式直動型平衡閥(減泄壓閥)

2 SUBPLATE MOUNTING SIZE 稱呼口徑

Size : 10
Cavity 孔口: CS10-3N
See Appendices-A 見附錄A
For Manifold See Appendices-B 油路板見附錄B

3 ADJUSTMENT PRESSURE 壓力調整範圍

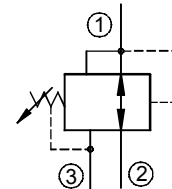
Code 編號	Adjustment pressure 壓力調整範圍
02	6 ~ 27 (bar)
04	14 ~ 55 (bar)
10	21 ~ 103 (bar)
14	28 ~ 145 (bar)

4 ADJUSTMENT OPTION 調整選擇

NONE	NONE: TOOL ADJUST 無：工具調整式	
K	K: HAND-BAR ADJUST K：手把調整式	
K1	K1: HAND-BAR ADJUST K1：手把調整式	
C	C: HEX WITH COVER CAP C：帶螺帽蓋	

5 DESIGN NO 設計編號

◆ CONTROL PORT(S) 動作形式



◆ DIMENSIONS 外型尺寸圖

