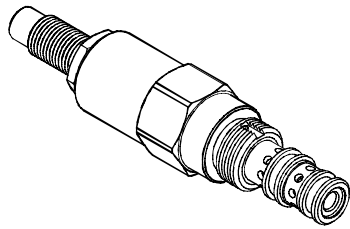


PRESSURE CONTROL VALVES 壓力控制閥

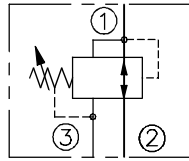
VGB SERIES CARTRIDGE TYPE DIRECT ACTING BALANCE VALVES (REDUCING/RELIEVING VALVES) VGB 系列插入式直動型平衡閥(減泄壓閥)

MODEL 型 式

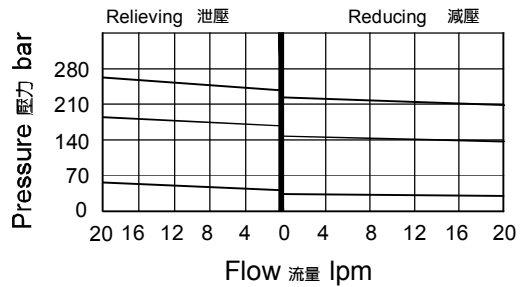
VGB-08



CONTROL PORT(S) 動作形式



PERFORMANCE 特性曲線



DESCRIPTION 說明

Direct-acting, pressure reducing valves reduce a high primary pressure at the inlet (port 2) to a constant reduced pressure at port 1. These valves incorporate a damped construction for stable operation allowing the use of high reduced pressure. This valve is open in the transition from reducing to relieving. It provides good pressure control and dynamic response. Full reverse flow from reduced pressure (port 1) to inlet (port 2) may cause the main spool to close. If reverse free flow is required in the circuit, consider adding a separate check valve to the circuit.

直動式減壓閥將進口(口2) 高壓主油路壓力調節減至口1所需的減壓壓力。此類閥的阻尼結構實現對高的減壓力的穩定調節。此閥在減壓與溢流模式之間的過渡位元是打開的。這種過渡位置使閥具備良好的壓力控制與動態回應性能。
從減壓壓力口(口1)到進口(口2)的反向液流可能導致主閥芯關閉。如果油路中需要反向自由流，可以考慮在油路中加入單向閥。

SPECIFICATIONS

Model Number 型式號碼	Operating Pressure 操作壓力 bar	Flow 流量 lpm	Weight 重量 Kg
VGB-08	350 (5076 psi)	20 (5.28 gpm)	0.8 (1.76 lbs)
Fluid Type 流體型式		ISO VG 32, 46, 68	
Viscosity 黏性 cSt		10~400 (59~1854 SSU)	
Operating Temperature 操作溫度 °C		-30~100 (-22~212°F)	
Contamination Level 污染標準		ISO4406. 20/18/15 NAS1638. 9	

HOW TO ORDER 編號說明

1	2	3	4	5	6
VGB	08	*	*	20	***

1 VALVE SERIES 系列名稱

VGB = Cartridge Type Direct Acting Balance Valves
(Reducing/Relieving Valves)
插入式直動型平衡閥(減泄壓閥)

2 SUBPLATE MOUNTING SIZE 稱呼口徑

Size:08
Cavity 孔口: CS08-3N
See Appendices-A 見附錄A
For Manifold See Appendices-B 油路板見附錄B

3 ADJUSTMENT PRESSURE 壓力調整範圍

Code 編碼	Adjustment pressure 壓力調整範圍
03	10 ~ 38 (bar)
14	34 ~ 140 (bar)
22	55 ~ 220 (bar)

4 ADJUSTMENT OPTION 調整選擇

NONE	NONE:TOOL ADJUST 無:工具調整式	
F	F:FACTORY PRESET, Non-ADJ. F:工廠預設,不可調整式	
H	H:FACTORY PRESET HIDDEN ADJ. H:工廠預設隱藏調整式	
K	K:HAND-BAR ADJUST K:手把調整式	

5 DESIGN NO 設計編號

6 SETTING IN BAR 設置(bar)

Pressure requested by customer, for example:
客戶指定壓力,例如:
30 : 30 bar
100 : 100 bar

DIMENSIONS 外型尺寸圖

