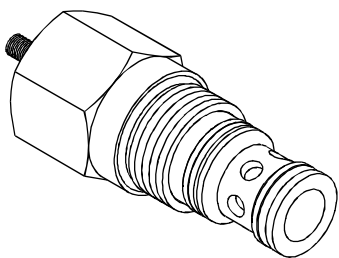


◆ **MODEL** 型 式

VEB-10

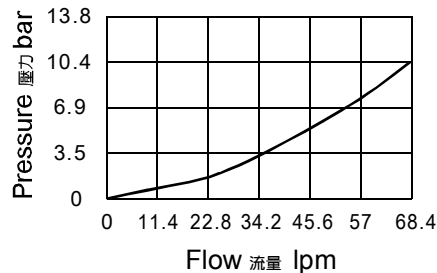


◆ **DESCRIPTION** 說明

The VEB-10 allows flow from ② to ① with the spring chamber constantly drained at port ③. On attainment of a pre-determined pressure at ①, set by a (remote) pilot relief valve connected to ③; or by a spring pressure, the spool shifts to restrict input flow at ②; thereby regulating pressure at ①. Such kind of valve can be applied in switch, compensation and remote control. 允許油液從 ② 流向 ① 流動,而彈簧室則保持在油口 ③ 泄油,當 ① 處的壓力達到連接在 ③ 的(遠程)先導溢流閥或彈簧壓力的預設值時,閥芯移動限制 ② 處進油量,從而調節 ① 處的壓力. 該閥可用在開關、補償和遠程遙控應用中.

◆ **PERFORMANCE**(Cartridge Only)

特性曲線



◆ **SPECIFICATIONS** 規 格

Model Number 型式號碼	Maximum Pressure 最大壓力 bar	Cracking Pressure 開啓壓力 bar	Maximum Flow 最大流量 lpm	Weight 重量 Kg
VEB-10	350 (5076psi)	5 (72.52psi)	68 (17.96 gpm)	0.2 (0.55 lbs)
Fluid Type 流體型式		ISO VG 32, 46, 68		
Viscosity 黏性 cSt		10~400 (59~1854 SSU)		
Operating Temperature 操作溫度 °C		-30~100 (-22~212°F)		
Contamination Level 污染標準		ISO4406. 20/18/15 NAS1638. 9		

◆ **HOW TO ORDER** 編號說明

1	2	3	4
VEB	10	*	*

1 **VALVE SERIES** 系列名稱

VEB= Cartridge Type Logic Pressure Reducing Valves
插入式邏輯減壓閥

2 **SUBPLATE MOUNTING SIZE** 稱呼口徑

Size :10
Cavity 孔口:CS10-3S
See Appendices-A 見附錄A
For Manifold See Appendices-B 油路板見附錄B

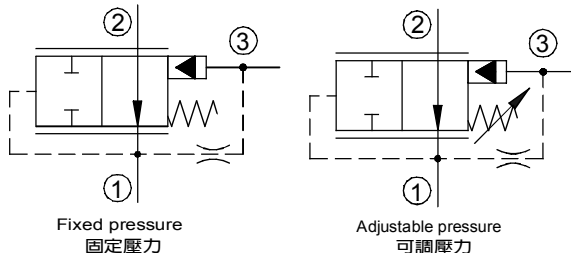
3 **ADJUSTMENT PRESSURE** 壓力調整範圍

Fixed pressure 固定壓力	Code 編碼	Cracking pressure 開啓壓力	
	50	5 (bar)	
Adjustable pressure 可調壓力	Code 編碼	Adjustment pressure 壓力調整範圍	
	M15	2 ~ 8 (bar)	

4 **DESIGN NO** 設計編號

◆ **CONTROL PORT(S)**

動作形式



◆ **DIMENSIONS**

外型尺寸圖

