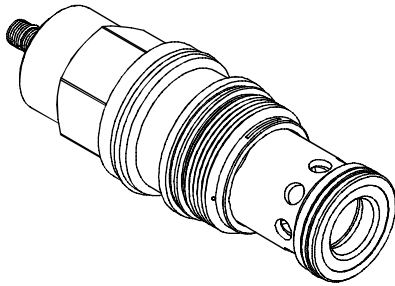


### ◆ MODEL 型式

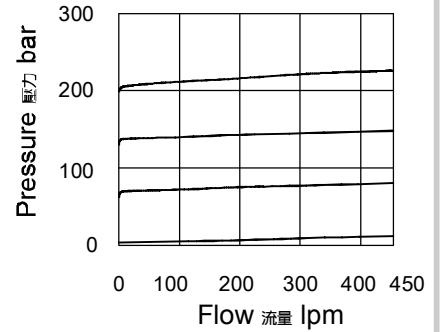
VDBW-10



### ◆ DESCRIPTION 說明

Ventable, pilot-operated, balanced-poppet relief cartridge valves. Ven port (port 3) connects other pilot or 2-way valves to provide for remote controlling. Suitable for use in load holding applications. 外接口控制, 先導控制式, 平衡錐閥結構溢流插式閥. 外接口(口3), 可以接入其它先導級控制閥或2通閥實現遠程控制. 適合使用在負載鎖緊應用中.

### ◆ PERFORMANCE(Cartridge Only) 特性曲線



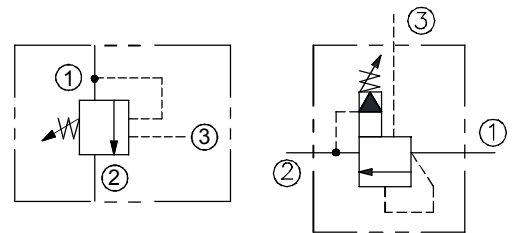
### ◆ SPECIFICATIONS 規格

Model Number 型式號碼	Maximum Pressure 最大壓力 bar	Maximum Flow 最大流量 Lpm	Weight 重量 Kg
VDBW-10	420 (6092 psi)	480 (126.80 gpm)	1.45 (3.20 lbs)
Fluid Type 流體型式		ISO VG 32,46,68	
Viscosity 黏性 cSt		10~400 (59~1854SSU)	
Operating Temperature 操作溫度 °C		-30~100 (-22~212°F)	
Contamination Level 污染標準		ISO4406. 20/18/15 NAS1638. 9	

### ◆ HOW TO ORDER 編號說明

1	2	3	4	5
VDBW	10	*	*	*

### ◆ CONTROL PORT(S) 動作形式



B  
290

VDBW

### 1 VALVE SERIES 系列名稱

VDBW = Cartridge Type Logic Relief Valves  
(Remote Control Included)  
插入式邏輯式調壓閥 (附遙控)

### 2 SUBPLATE MOUNTING SIZE 稱呼口徑

10: T-19A  
Cavity 孔口: CST-19A  
See Appendices-A 見附錄A  
For Manifold See Appendices-B 油路板見附錄B

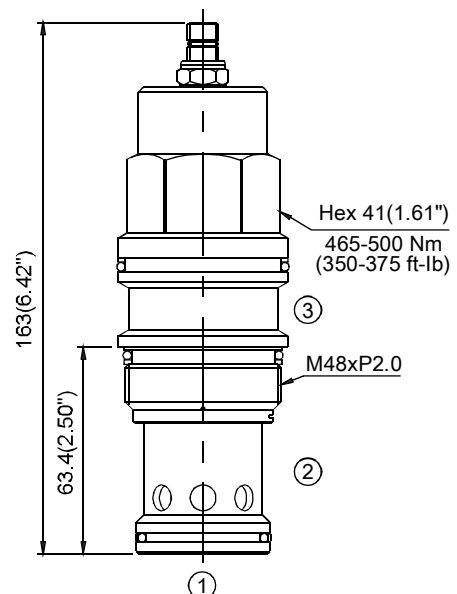
### 3 FILTER 濾網

Non: Standard (With Filter) 標準型(附濾網)  
NF: NF (No Filter) NF型(無濾網)

### 4 ADJUSTMENT PRESSURE 壓力調整範圍

Code 編碼	Adjustment pressure 壓力調整範圍
02	※ ~ 25 (bar)
06	※ ~ 60 (bar)
10	※ ~ 100 (bar)
20	8 ~ 210 (bar)
30	8 ~ 315 (bar)
40	12 ~ 420 (bar)

### ◆ DIMENSIONS 外型尺寸圖



### 5 ADJUSTMENT OPTION 調整選擇

NONE	NONE: TOOL ADJUST 無: 工具調整式	
K	K: HAND-BAR ADJUST K: 手把調整式	