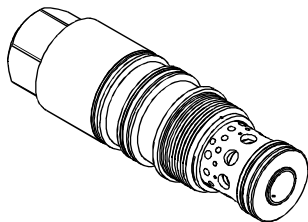


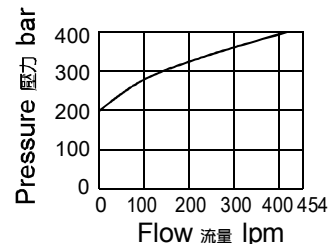
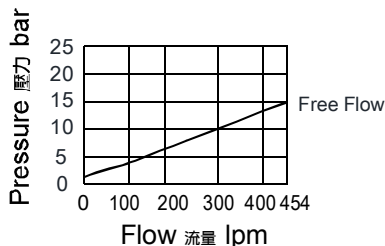
◆ **MODEL** 型 式

**VCBM-10**



◆ **PERFORMANCE**(Cartridge Only)

特性曲線



◆ **DESCRIPTION** 說明

Vented, load reactive, load control valves with pilot assist combine two valves' function; a check valve and a relief valve. The check valve allows free flow from the directional valve (port 2) to the load (port 1) while a direct-acting, pilot assisted relief valve controls flow from port 1 to port 2. Pilot assist at port 3 of the relief valve, at a rate determined by the pilot ratio, through the vent (port 4).

帶外接口先導協助開啓的負載反作用，負載控制閥結合了兩種閥的功能：單向閥與溢流閥。允許油液從方向閥(口2)到負載口(口1)單向自由流通，直動式，先導協助溢流閥功能可以控制從口1到口2的液流。口3先導協助以先導比率通外接口(口4)。

◆ **SPECIFICATIONS** 規 格

Model Number 型式號碼	Maximum Pressure 最大壓力 bar	Pilot Ratio 引導比例	Adjustment Pressure 壓力調整範圍 bar	Maximum Flow 最大流量 lpm	Weight 重量 Kg
VCBM-10	350 (5076 psi)	1.5:1 / 3:1 / 4.5:1	* ~ 350	480 (126.80 gpm)	1.92 (4.23 lbs)
<b>Fluid Type</b> 流體型式			ISO VG 32, 46, 68		
<b>Viscosity</b> 黏性 cSt			10~400 (59~1854 SSU)		
<b>Operating Temperature</b> 操作溫度 °C			-30~100 (-22~212°F)		
<b>Contamination Level</b> 污染標準			ISO4406. 20/18/15 NAS1638. 9		

◆ **HOW TO ORDER** 編號說明

1	2	3	4	5
VCBM	10	35	1.5A	*

**1 VALVE SERIES** 系列名稱

VCBM = Cartridge Type Load Control Valves  
插入式負載控制閥

**2 PORTING** 閥口

10:T-24A

Cavity 孔口: CST-24A

See Appendices-A 見附錄A

For Manifold See Appendices-B 油路板見附錄B

**3 ADJUSTMENT PRESSURE** 壓力調整範圍

Check Spring Pressure 1.8bar 止逆閥彈簧壓力 1.8bar		
Code 編碼	Adjustment pressure 壓力調整範圍	Pilot ratio 引導比例
28	70 ~ 280 (bar)	1.5:1 3:1
35	140 ~ 350 (bar)	4.5:1

**4 PILOT RATIO** 引導比例

1.5A : 1.5:1 (With sealed pilot) 導壓室密封

3A : 3:1 (With sealed pilot) 導壓室密封

4A : 4.5:1 (With sealed pilot) 導壓室密封

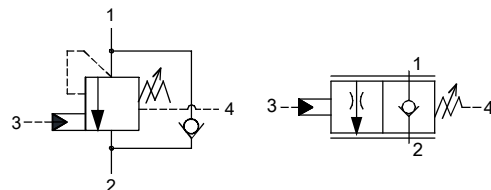
**5 SEALS** 密封件

Non : NBR (Standard) 無記號：丁腈橡膠(標準型)

HN : HNBR 氣化丁腈橡膠

V : VITON 氟橡膠

◆ **CONTROL PORT(S)** 動作形式



◆ **DIMENSIONS** 外型尺寸圖

