

SOLENOID FLOW CONTROL VALVES

MHF SERIES

電磁流量閥

◆ MODEL 型 式

MHF-02



◆ FEATURES

- MHF series pressure temperature compensated solenoid flow control valves can be used for the "P" port, "T" port, or "A" port.
- Cast iron valve bodies are provided strength and durability for longer life.
- Internal hardened steel components also provide durable life.
- Two flow adjustment options are: hex. screw or knob.

- 特 點
- MHF 系列定磁流控制閥(附壓力溫度補償)均可使用 P 孔、T 孔、A 孔。
- 閥本體鑄鐵強度夠且耐久性、壽命長。
- 內部硬鋼零件提高產品壽命。
- 六角螺絲或把手兩種流量調整選擇。

◆ SPECIFICATIONS 規 格

Model Number 型式號碼	Maximum Pressure 最大壓力 bar	Connecting PT 適用管徑	Adjustment Flow 調整流量範圍 L/M	Maximum Flow 最大流量 lpm	Weight 重量 Kg
MHF-02- * -20	70 (1000 psi)	1/4"	0.1 ~ 4	20 (5.28 gpm)	2.5 (5.5 lbs)
MHF-02- * -10	250 (3525 psi)		0 ~ 35	35 (9.25 gpm)	1.3 (2.9 lbs)
MHF-02- * -30	250 (3625 psi)		0.1 ~ 35	35 (9.25 gpm)	2.0 (4.4 psi)
Fluid Type 液體型別			ISO VG 32, 46, 68		
Viscosity 黏性 cSt			10~400 (59~1854 SSU)		
Operating Temperature 操作溫度 °C			-15~70 (-5~158 °F)		
Contamination Level 污染標準			ISO4406, 21/19/16 NAS1638,10		
Surface Treatment 表面處理			Zinc Phosphate Compound 鋅磷酸鹽化合物		

● All screws with metric measure, if require inch measure, please contact us.

所附螺絲皆為公制標準規格品，若需英制螺絲請另外備註說明。

◆ HOW TO ORDER 編號說明

1	2	3	4	5
MHF	02	*	**	20

1 VALVE SERIES 系列名稱

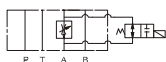
MHF= Solenoid Flow Control Valves

2 SUBPLATE MOUNTING SIZE: 稱呼口徑

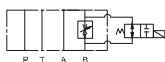
02 = 1/4" (6mm)
ISO CETOP3
DIN NG 6
NFPA D03

3 CONTROL PORT(S) 動桿形式

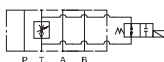
A=A Port Only



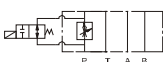
B=B Port Only



T=T Port Only



P=P Port Only



4 TYPE OF COIL 電磁線圈型別

A1:AC110 D1:DC12
A2:AC220 D2:DC24

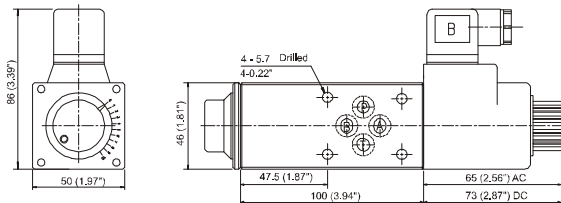
5 DESIGN NO 設計編號

- 20: Pressure temperature compensation is provided.
附壓力溫度補償
- 10: Pressure temperature compensation is not provided.
不附壓力溫度補償
- 30: Pressure temperature compensation is provided.
附壓力溫度補償

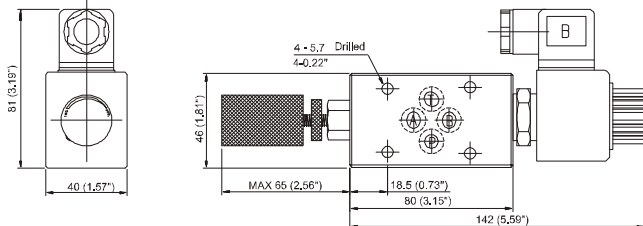
◆ DIMENSIONS 外型尺寸圖

MHF-02-A-20 / MHF-02-T-20 / MHF-02-P-20

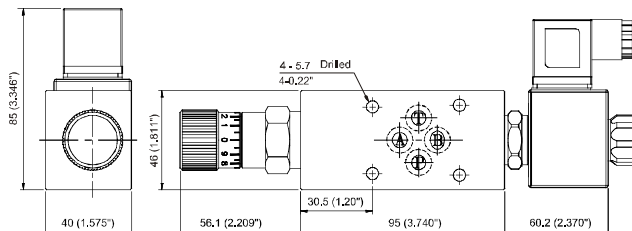
- NOTE: MHF-02-A-20 Coil at B side. 注意: MHF-02-A-20 线圈在 B 侧。



MHF-02-A-10 / MHF-02-B-10 / MHF-02-T-10 / MHF-02-P-10



MHF-02-A-30 / MHF-02-B-30 / MHF-02-T-30 / MHF-02-P-30



◆ Mounting Interface 安装尺寸图

ISO 4401-AB-03-4-A

