

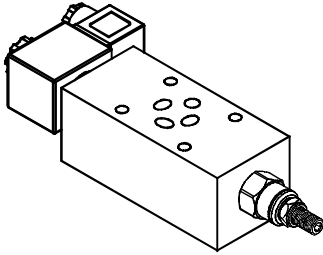
SOLENOID TWO-PRESSURE REDUCING MODULAR VALVES

MSBR SERIES

積層型電磁式二段減壓閥

◆ MODEL 型式

MSBR-02



◆ FEATURES

- MSBR series modular two sections reducing valves can be used to reduce pressure on "P" port.
- Casting iron valve bodies provide strength and durability for longer life.
- Internal hardened steel components also provide durability.
- High pressure setting as the primary pressure ; Low pressure setting as the secondary pressure.
- Two flow adjustment options are either Hex. Screw or knob.
- It has the function of changeover between high and low pressure within the same circuit. It is suitable for single action circuit.

特性

- MSBR 系列積層型二段式減壓閥可使用P孔減少壓力
- 閥本體鑄鐵強度夠且耐久性、壽命長
- 內部硬鋼原件提高產品壽命
- 高壓為一次壓壓力；低壓為二次壓壓力
- 六角螺絲或把手兩種壓力調整選擇
- 在同一迴路裏可變換高低壓力兩種功能，適用於單一動作迴路場合

◆ SPECIFICATIONS 規格

Model Number 型式號碼	Maximum Pressure 最大壓力 bar	Connecting PT 適用管徑	Maximum Flow 最大流量 lpm	Weight 重量 Kg
MSBR-02	350 (5075 psi)	1/2"	40 (10.56 gpm)	3.2 (7.05 lbs)
Fluid Type 流體型式			ISO VG 32, 46, 68	
Viscosity 黏性 cSt			10~400 (59~1854 SSU)	
Operating Temperature 操作溫度 °C			-15~70 (-5~158 °F)	
Contamination Level 污染標準			ISO4406. 21/19/16 NAS1638,10	
Surface Treatment 表面處理			Zinc Phosphate Compound 鋅磷酸鹽 化合物	

● All screws with metric measure , if require inch measure , please contact us. 所附螺絲皆為公制標準規格品，若需英制螺絲請另外備註說明。

◆ HOW TO ORDER 編號說明

1	2	3	4	5	6	7	8
MSBR	— 02 —	P	20	— A1 —	NC	— *	— 30

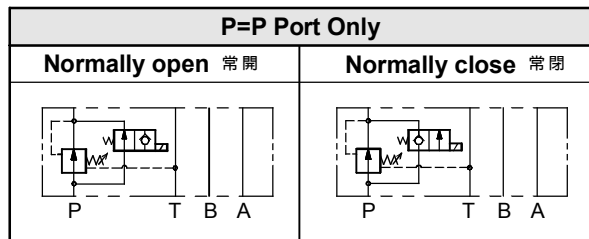
1 VALVE SERIES 系列名稱

MSBR = Solenoid Two-pressure Reducing Modular Valves
積層型電磁式二段減壓閥

2 SUBPLATE MOUNTING SIZE: 稱呼口徑

02 = 1/4"(6mm)
ISO CETOP3
DIN NG 6
NFPA D03

3 CONTROL PORT(S) 動作形式



4 ADJUSTMENT PRESSURE 壓力調整範圍

Order 編號	Adjustment pressure 壓力調整範圍
02	4 ~ 20 (bar)
04	4 ~ 60 (bar)
09	4 ~ 100 (bar)
20	7 ~ 210 (bar)

5 TYPE OF COIL 電磁線圈類型

A1: RAC110V 60/50HZ D1: DC12V
A2: RAC220V 60/50HZ D2: DC24V

6 CONTROL WAY 控制方式

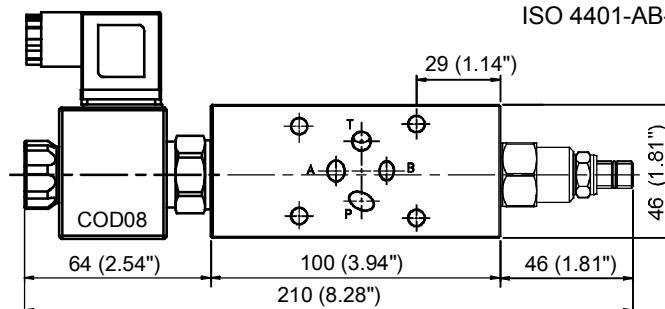
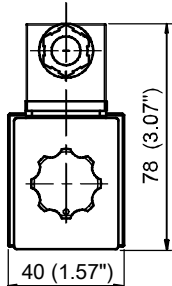
NO: normally open 常開
NC: normally close 常閉

7 ADJUSTMENT OPTION 調整選擇

NONE	NONE: TOOL ADJUST 無：工具調整式	
K	K: HAND-BAR ADJUST K：手把調整式	

8 DESIGN NO 設計編號

◆ DIMENSIONS 外型尺寸圖



◆ Mounting Interface 基座尺寸圖

ISO 4401-AB-03-4-A