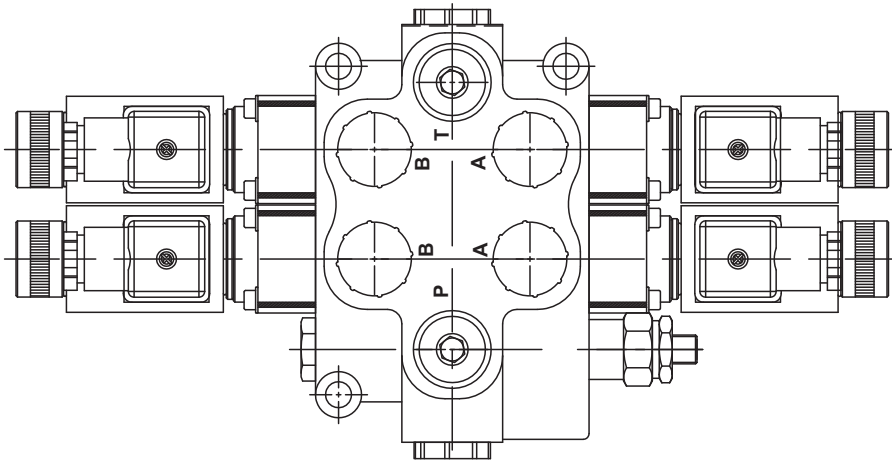
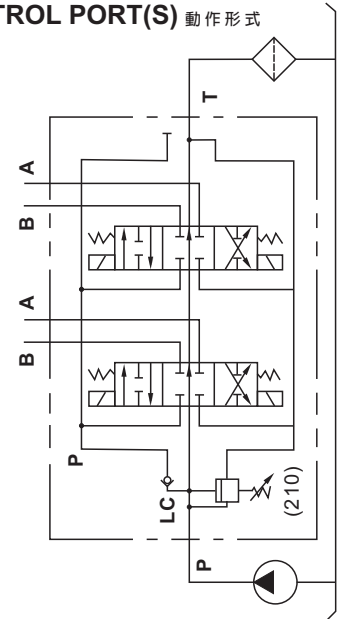


### ◆ MODEL 型 式

## DME-04



### ◆ CONTROL PORT(S) 動作形式



### ◆ SPECIFICATIONS 規 格

Model Number 型式號碼	Maximum Pressure 最大壓力 bar	Maximum Flow 最大流量 lpm	Weight 重量 Kg
DME-03-**-**	350 (5075 psi)	45 (11.9gpm)	*
DME-04-**-**	350 (5075 psi)	70 (18.5gpm)	*
<b>Fluid Type 流體型式</b>		ISO VG 32 , 46 , 68	
<b>Viscosity 黏性 cSt</b>		10~400 (59~1854 SSU)	
<b>Operating Temperature 操作溫度 °C</b>		-15~70 (-5~158 °F)	
<b>Contamination Level 污染標準</b>		$\beta_{10} \geq 75$ , Under NAS Class 12, 25 $\mu$	

● **Pressure regulation valve, Max. pressure 210 bar**  
壓力調節閥標準最大壓力210bar

※Need to establish the pressure when 350bar, please tell in advance

※The relief valves please refer to the VRV-03 series

※如需設定壓力為350bar需先告知 ※調壓閥請參考VRV-03系列

### ◆ HOW TO ORDER 編號說明

<b>1</b>	<b>2</b>	<b>3</b>	<b>4</b>	<b>5</b>	<b>6</b>	<b>7</b>
DME	04	C2	1N	I*	U*	**

#### 1 VALVE SERIES 系列名稱

DME = Solenoid Stack Valve (Monoblock)  
電磁式多路換向閥(單體式)

#### 5 INLET SECTION 入油測

See Page 029  
見頁面029

#### 2 SUBPLATE MOUNTING SIZE 稱呼口徑

03 = G3/8" 04 = G1/2"

#### 6 OUTLET SECTION 出油測

See Page 030  
見頁面030

#### 3 SPOOL TYPES 滑柱型式

See Page 028  
見頁面028

#### 7 COIL TYPES 電磁線圈類型

D1: DC12V D2: DC24V

#### 4 NUMBER OF VALVE BLOCKS 連數

1N~7N = 1~7 BLOCKS

# STACK VALVE

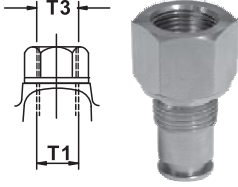
## DME SERIES

多路換向閥系列

### ◆ DIMENSIONS 外型尺寸圖

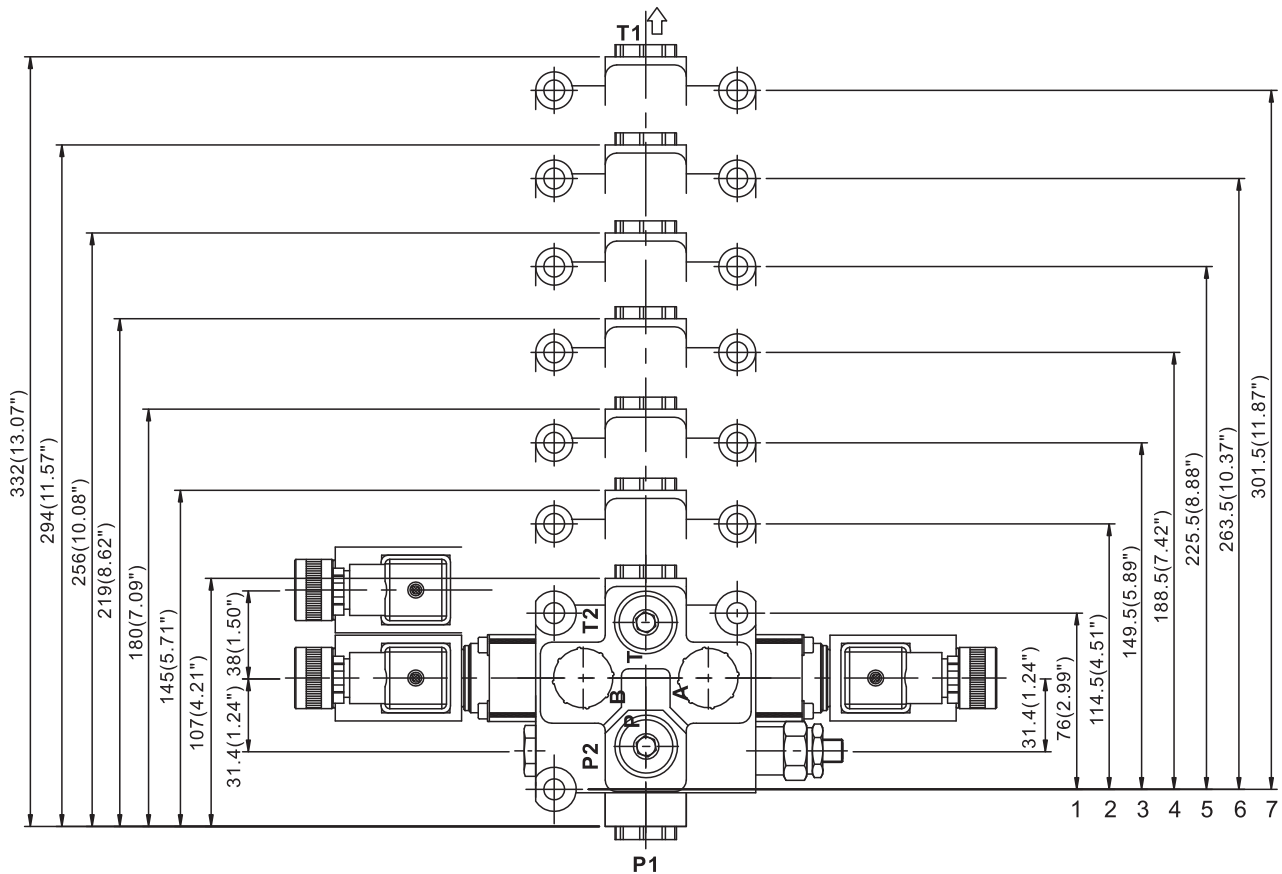
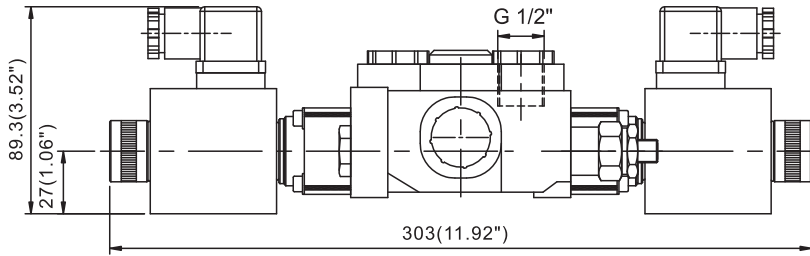
#### ● CARRY-OVER PLUG (on T1 Port)

轉接插頭 (接口在T1)



T1	T3	Pruchasing No 訂貨編號
G 1/2"	G 1/2"	COG12
G 1/2"	G 1/2"	

※Extra attachment  
※特別附件



### ◆ AVAILABLE THREADS 適用螺紋

PORTS 閥口	P1	P2	A-B	T1	T2
DME-03-**-**	G 1/2"	G 3/8"	G 3/8"	G 1/2"	G 3/8"
DME-04-**-**	G 1/2"	G 1/2"	G 1/2"	G 1/2"	G 1/2"