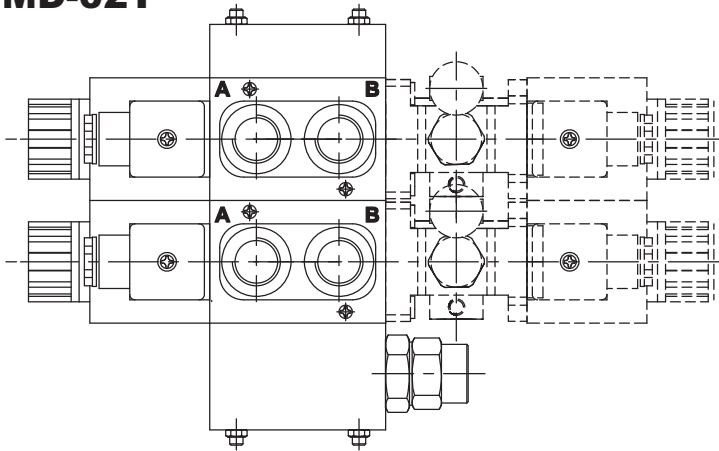
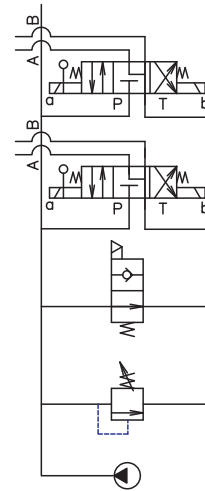


◆ MODEL 型 式

DMD-02T



◆ CONTROL PORT(S) 動作形式



◆ SPECIFICATIONS 規 格

Model Number 型式號碼	Maximum Pressure 最大壓力 bar	Maximum Flow 最大流量 lpm	Weight 重量 Kg
DMD-02T	250 (3625 psi)	70 (18.49 gpm)	*
Fluid Type 流體型式		ISO VG 32 , 46 , 68	
Viscosity 黏性 cSt		10~400 (59~1854 SSU)	
Operating Temperature 操作溫度 °C		-15~70 (-5~158 °F)	
Contamination Level 污染標準		$\beta_{10} \geq 75$, Under NAS Class 12, 25 μ	

● Pressure regulation valve, Max. pressure 210 bar
壓力調節閥標準最大壓力210bar

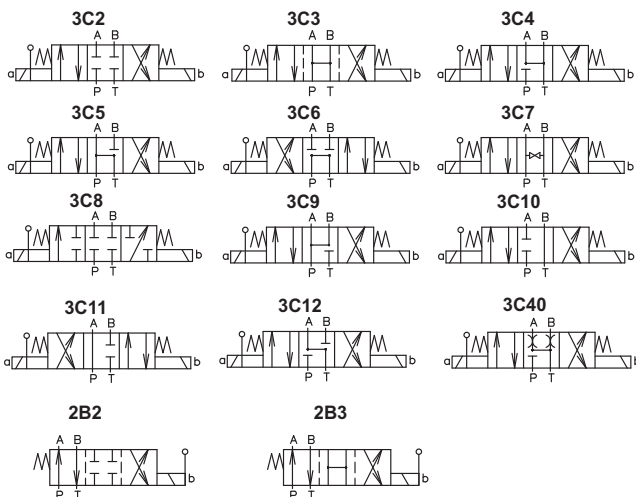
◆ HOW TO ORDER 編號說明

1	2	3	4	5	6	7	8
DMD	***	02	T	**	*	1N	S1

1 VALVE SERIES 系列名稱

DMD = Solenoid Manual Operated
Stack Valve(sectional)
電磁式手動多路換向閥(片式)

2 SPOOL TYPES 滑柱型式



3 SUBPLATE MOUNTING SIZE 稱呼口徑

02=1/4"(6mm) ISO CETOP3
DIN NG 6 NFPA D03

4 CONNECTING TYPE 連接型式

T:TYPE:THREADING TYPE (螺紋連接)

5 TYPE OF COIL 電磁閥電磁線圈類型

A1 : AC110 60HZ D1 : DC12
A115 : AC115 50HZ D2 : DC24
A230 : AC230 50HZ
A2 : AC220 60HZ

6 WIRING TYPE 接線型式

Non:WIRING BOX TYPE(DIN) X: DOUBLE LEAD
無:接線盒式 (DIN) 雙接線方式

7 NUMBER OF VALVE BLOCKS 連數

1N~7N = 1~7 BLOCKS

8 INLET SECTION WITH RELIEF VALVES AND RELEASE VALVE 入油側附釋壓閥。

S1:DC12V S2:DC24V
S3:RAC110V S4:RAC220V

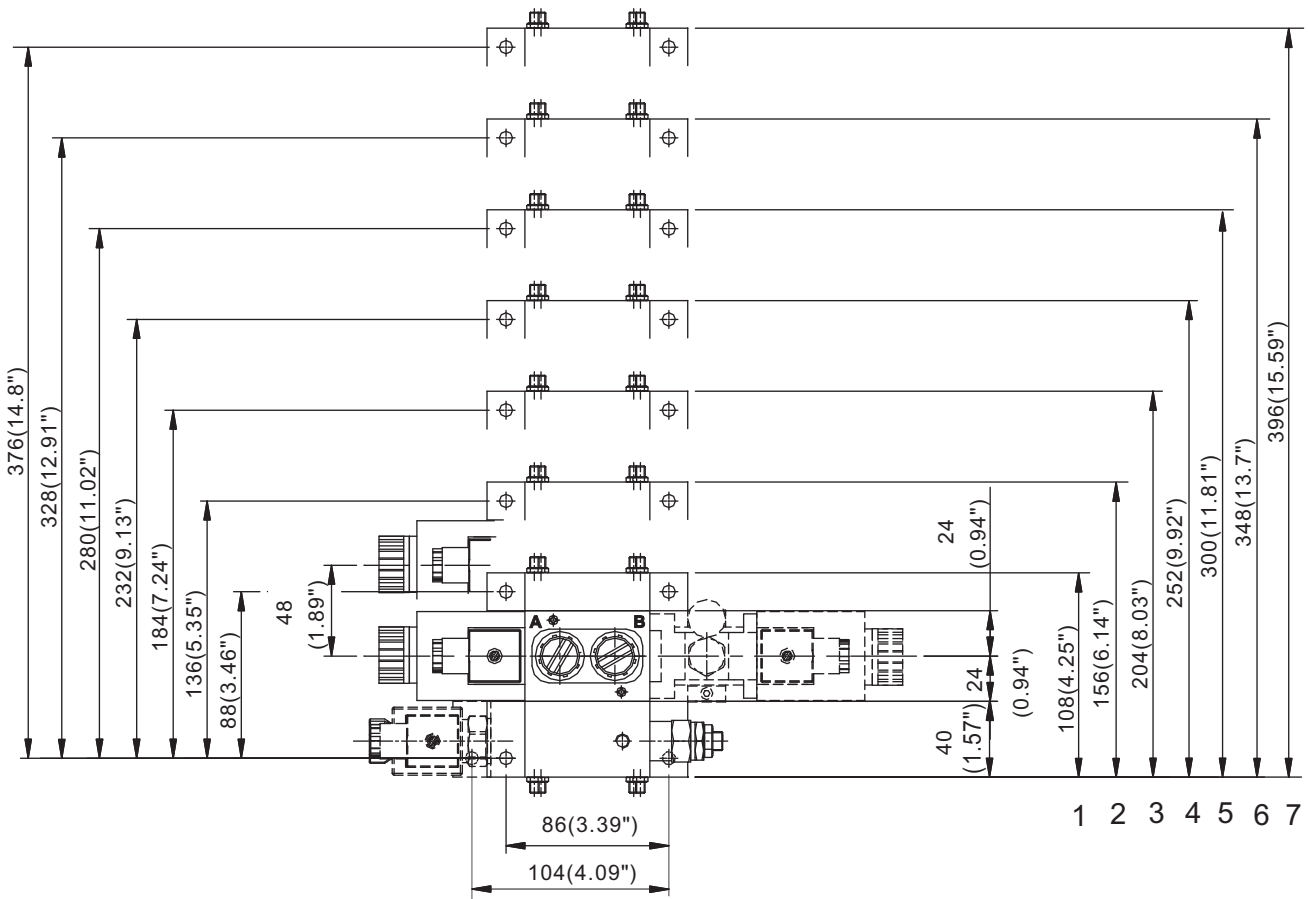
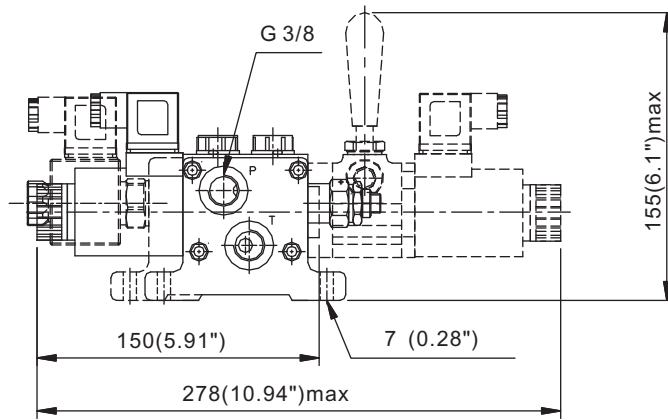
※Extra attachment See Page 029 特別附件見頁面029

STACK VALVE

DMD SERIES

多路換向閥系列

◆ DIMENSIONS 外型尺寸圖



◆ AVAILABLE THREADS 適用螺紋

PORTS 閥口	P	A-B	T
DMD-02T-**-**	G 3/8"	G 3/8"	G 3/8"